

IAABO

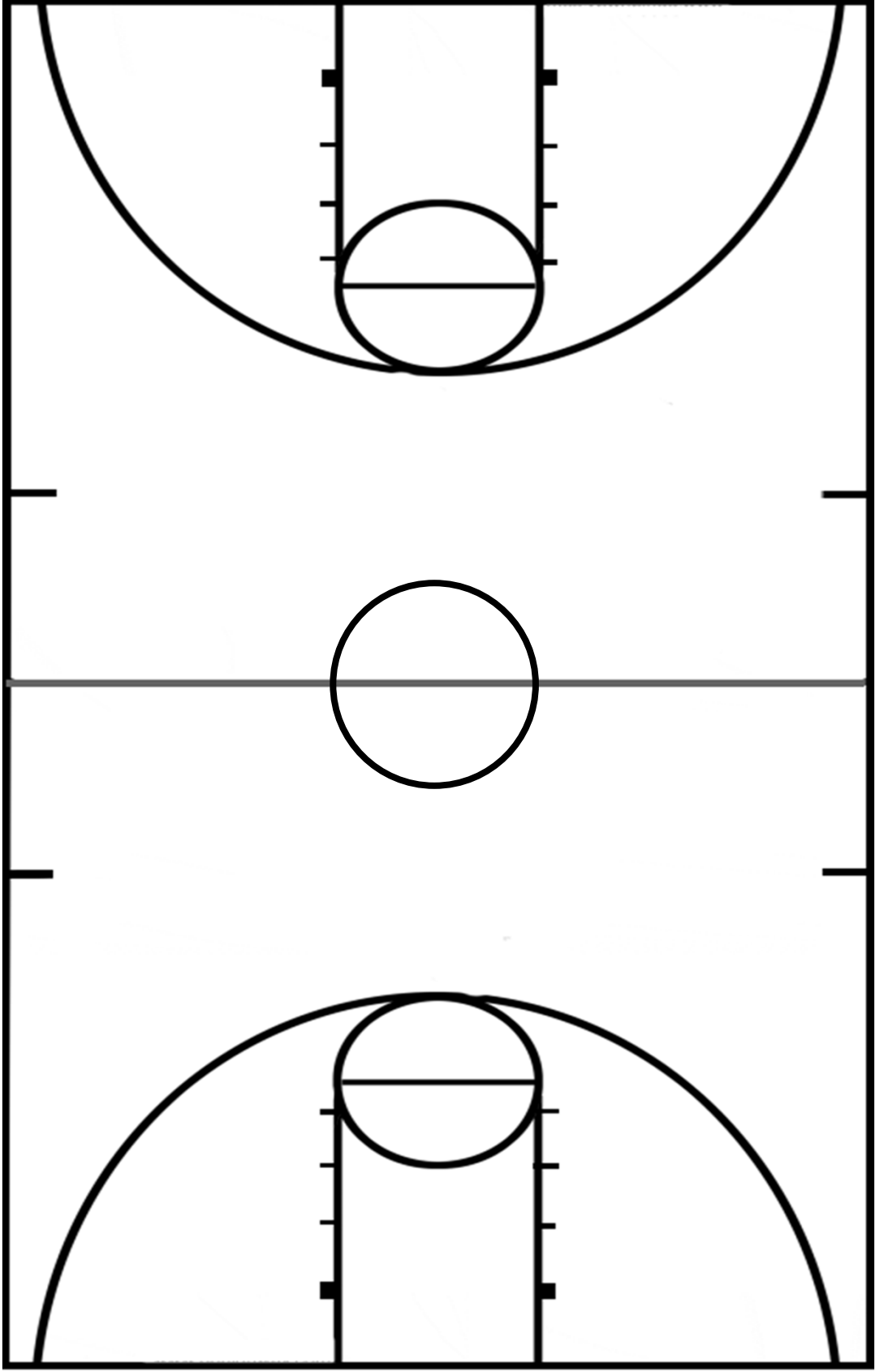
2020/2021

Basketball Rules Workbook



“One Rule, One Interpretation”

Name: _____



Scorers' Table



Lesson 1 - Court and Equipment

This examination is presented in a “Yes-No” format. Carefully read each situation described. If the answer is “YES,” draw a circle around the “Y.” If the answer is “NO,” draw a circle around the “N.”

NOTE: On this examination, “In the act of shooting” means the ball is still in the hands of the shooter.

| | | | |
|--|-----|-----|----|
| 1. Music is being played while the ball is live. The official rules that this only allowed during time-outs, pre-game, post-game and intermission. Is the official correct? | 1. | Yes | No |
| 2. The gym does not have a visible clock, but has a visible scoreboard. The official rules that they both must be visible, except in the case of a malfunction. Is the official correct? | 2. | Yes | No |
| 3. Official rules that the new rectangular backboard must have padding along the entire bottom and at least 15 inches up the side. Is the official correct? | 3. | Yes | No |
| 4. The free throw line is 15 feet from the farthest edge to the face of the backboard. Is this correct? | 4. | Yes | No |
| 5. To check if the game ball is properly inflated, the referee drops it from a height of 6 feet from the bottom of the ball. The ball bounces back to a height of 52 inches at the top of the ball. The referee says that the ball is not properly inflated. Is the referee correct? | 5. | Yes | No |
| 6. The ideal measurements of the playing court is 84 x 50 feet. Is this correct? | 6. | Yes | No |
| 7. The sidelines and end lines shall be a minimum of 3 inches in width. Is this correct? | 7. | Yes | No |
| 8. The 3-point arc has a radius of 19 feet 9 inches from the center of the basket. Is this correct? | 8. | Yes | No |
| 9. The referee looks at the ball before a girls' basketball game and the ball is stamped 28.5 inches. Is this the correct size ball to use? | 9. | Yes | No |
| 10. A-1 has the ball for a throw-in, as A-1 is making the throw-in pass, A-1 steps on the boundary line but not over it. Is A-1 still out of bounds? | 10. | Yes | No |
| 11. The basket ring shall have its upper edge be ten feet above the floor. Is this correct? | 11. | Yes | No |
| 12. The basket ring shall be 18 inches in diameter. Is this correct? | 12. | Yes | No |
| 13. The net shall be suspended from the ring and be 15 to 18 inches in length. Is this correct? | 13. | Yes | No |
| 14. In facilities that do not have a red light or LED light behind the backboard shall use the audible timer's signal to indicate time has expired at the end of each quarter. Is this correct? | 14. | Yes | No |
| 15. Dribbler A-1 brushes against B-2, who is touching the boundary line. Official sounds the whistle and rules A-1 is out of bounds. Is the official correct? | 15. | Yes | No |
| 16. Dribbler A-1 is near the sideline when B-2 standing on the boundary line reaches out and touches the ball. The Official sounds the whistle and rules an out of bounds violation on Team B. Is the official correct? | 16. | Yes | No |
| 17. Dribbler A-1 dribbling up the sideline touches the inside edge of the boundary line. The official rules A-1 is out of bounds. Is the official correct? | 17. | Yes | No |
| 18. The division line is considered to be in the backcourt. Is that correct? | 18. | Yes | No |
| 19. Spirit participants must remain outside the playing area during a 30 second time out. Is this correct? | 19. | Yes | No |
| 20. The spaces around the restraining circle are 24 inches deep. Is this correct? | 20. | Yes | No |
| 21. A-1's field goal attempt hits the ring and bounces off the top of the backboard and goes in. The official disallows the goal. Is the official correct? | 21. | Yes | No |
| 22. A-1's field goal attempt hits the ring and bounces off the top of the backboard support and goes in. The official disallows the goal. Is the official correct? | 22. | Yes | No |
| 23. A-1 is near the end line and attempts a field goal that passes over the corner of the rectangular backboard. The official rules this an out of bounds violation. Is the official correct? | 23. | Yes | No |
| 24. A-1's field goal attempt hits the side of the backboard. The official allows play to continue. Is the official correct? | 24. | Yes | No |
| 25. A-1 throws a long pass to A-2 that hits a rope hanging from the ceiling near the division line. The official rules this out of bounds violation. Is the official correct? | 25. | Yes | No |



Court and Equipment REVIEW SHEET of Lesson 1

1. What are the ideal measurements for the high school court? _____ x _____
2. The sidelines and end lines shall be a minimum of _____ inches in width.
3. The division line is how many inches wide? _____
4. Which is the largest? frontcourt _____ backcourt _____
5. The 3-point line has a radius of _____ feet and _____ inches.
6. Are logos, markings or lettering allowed on the backboard or basket? Yes or No
7. What is the inside diameter of the basket ring? _____ inches
8. How high is the basket ring from the floor? _____ feet
9. If the ball is properly inflated, when dropped from 6 feet, it will bounce between _____ and _____ inches.
10. The net shall extend below the basket ring _____ to _____ inches.
11. A player is out of bounds when he/she touches the floor or any object other than player/person outside the boundary line. True _____ False _____
12. The ball is out of bounds when: (circle all that apply)
 - a. It touches a player who is out of bounds.
 - b. It touches any other person, the floor or object outside a boundary line.
 - c. It touches the supports or back of the backboard.
 - d. It touches the ceiling, overhead equipment or supports.
 - e. It touches the side or the top of the backboard.
 - f. When it passes over a rectangular backboard.
 - g. When it passes over a fan shaped backboard.
13. The spots around the center circle for the jump ball are _____ inches deep.
14. The clock and visible scoreboard are mandatory except in case of malfunction.
True _____ False _____
15. The ball for boys' contests should have a circumference of _____ to _____ inches.
16. The ball for girls' contests should have a circumference of _____ to _____ inches.
17. Non-playing personnel may stand on the endline, outside the free throw lane lines.
True _____ False _____
18. Cheerleaders, dance teams, media etc. shall remain outside the playing area during a 30 second time out. True _____ False _____



Lesson 2 - Official's Duties and Uniforms

NOTE: On this examination, "In the act of shooting" means the ball is still in the hands of the shooter.

| | | | |
|--|-----|-----|----|
| 1. The referee is checking the scorebook before the game, he/she notices the scorer and timer are not seated next to one another. The referee rules they must be seated next to one another. Is the referee correct? | 1. | Yes | No |
| 2. The scorer notifies the official of a discrepancy in the score. The referee cannot find the error. The referee rules that the progressive score in the official scorebook will prevail. Is the referee correct? | 2. | Yes | No |
| 3. Team A submits its squad list and starting line-up at least 10 minutes before the game. After the 10-minute mark, coach of Team A adds two names to the squad list and Team A is assessed one technical foul. As the game is in progress, the scorer notifies the official that two players of Team A are wearing different numbers than recorded in the official scorebook. Official assesses no penalty. Is the official correct? | 3. | Yes | No |
| 4. Ten minutes prior to the start of the game, the official, checking the scorebook, discovers two squad members are wearing identical numbers. Official assesses a technical foul to the second listed squad member. Is the official correct? | 4. | Yes | No |
| 5. For no apparent reason, A-5 changes his/her shirt and number at halftime and reports the change to the scorer and official. Official rules that no penalty will be assessed. Is the official correct? | 5. | Yes | No |
| 6. The timer sounds the horn with 20 seconds before the expiration of a 60-second time out. Is that correct? | 6. | Yes | No |
| 7. The timer sounds the warning horn to begin the 15 second interval of time for the coach to replace an injured player. | 7. | Yes | No |
| 8. With 3:00 remaining in the 3 rd quarter, the official notices A-3 is wearing an illegal jersey. The official charges the head coach with a direct technical foul. Is the official correct? | 8. | Yes | No |
| 9. A-1 is called for traveling. Official sounds the whistle and glances at the clock. Three seconds is showing but the timer stops the clock with 2 seconds remaining. Official rules no timing mistake has occurred and makes no correction. Is the official correct? | 9. | Yes | No |
| 10. The official administers a throw-in to Team A in the backcourt with 2:20 remaining in the second quarter. The official has a backcourt count at 8 when the ball is tipped out of bounds. The official notices the clock remains at 2:20. The official has the clock reset to 2:12. Is the official correct? | 10. | Yes | No |
| 11. A-1 scored a field goal attempt very near the expiration of time in the second quarter. The officials confer and cannot decide whether or not the goal should count. The referee confers with the table officials and they disagree whether or not the goal shall count. The officials count the goal. Are the officials correct? | 11. | Yes | No |
| 12. The official's jurisdiction is terminated and the final score approved when all officials leave the visual confines of the playing area. Is this correct? | 12. | Yes | No |
| 13. A-1 is dribbling near the sideline and loses his/her balance in front of their coach, the coach instinctively uses his/her hands to prevent player from falling out of bounds. A-1 maintains inbounds status and then passes the ball to a teammate. The official rules this a legal play. Is the official correct? | 13. | Yes | No |
| 14. The referee shall designate the official scorer, timer, scorebook and timepiece as well as inspect and approve all equipment before each contest. Is this correct? | 14. | Yes | No |
| 15. Team A school colors are white and blue. They enter the court wearing home white jerseys. A-1 enters the court wearing a red wristband and red headband. Official rules A-1's wristband and headband are illegal. Is the official correct? | 15. | Yes | No |
| 16. A-1 is wearing a white arm sleeve, A-2 is wearing a black arm sleeve. The official rules that arm sleeves must be a matching color. Is the official correct? | 16. | Yes | No |
| 17. During the pre-game warm-ups, the official notices that a team member of Team A is wearing an earring. Official informs the coach that the team member must remove the jewelry before he/she can continue warming up. Is the official correct? | 17. | Yes | No |
| 18. Team A enters the court wearing white uniforms with visible red undershirts. The official informs the coach of Team A that the team members will not be able to participate until the undershirts are removed. Is the official correct? | 18. | Yes | No |
| 19. A-1 is wearing his/her home white uniform. In addition to the uniform he/she is wearing a white headband, white wristband, white compression shorts and a white undershirt that all feature a visible manufacturer's logo. The official rules that all apparel is legal. Is the official correct? | 19. | Yes | No |
| 20. A-1 enters the court wearing a cast on his/her forearm covered by soft padding. The official rules that A-1 may not participate in the game wearing the cast. Is the official correct? | 20. | Yes | No |

Officials' Duties and Uniforms
REVIEW SHEET of Lesson 2



1. It is recommended _____ or mandatory _____ that the scorer and timer be seated next to one another.
2. Prior to the game, when does the officials' jurisdiction begin? _____
3. The officials should arrive on the court at least _____ minutes before the scheduled starting time of the game.
4. When does the jurisdiction of the official end? _____
5. Each team must be notified _____ minutes before the second half begins.
6. How does the referee approve the final score when the game is over? _____
7. If the scorer makes a mistake in the scorebook, when can that mistake be corrected? _____
8. A team must submit its squad list and designate their starters _____ minutes before the start of the game.
9. Which of the following is an administrative technical? (circle all that apply)
 - a. Team A fails to submit its roster and starters, 10 minutes before the start of the game.
 - b. After the 10 minute mark in pre-game warm ups, Team A adds name to the roster.
 - c. After the 10 minute mark in pre-game warm ups, Team A changes a number of a team member.
 - d. Team A has identical numbers listed on the team roster in the scorebook.
10. The timer shall sound a warning horn _____ seconds before the expiration of all time-outs, intermissions, and intervals of time to replace players removed from the game.
11. The coach has _____ seconds to replace a disqualified, injured or a player directed to leave the game.
12. When may official correct timing mistakes? _____
13. Which of the following items **must** be deemed illegal? (circle all that apply)
 - a. A cast on the forearm covered with soft padding.
 - b. A hard brace on the elbow covered with soft padding.
 - c. A nose guard molded to the face without any sharp edges to protect a broken nose.
 - d. A hard object on the upper arm covered with soft padding.
 - e. A knee brace that is unaltered from the manufacturer's original design.
14. Assuming A-1 is wearing a home white jersey, which of the following are **illegal**? (circle all that apply)
 - a. A-1 has a visible manufacturer's logo on shirt.
 - b. A-1 has a visible manufacturer's logo on undershirt.
 - c. A-1 has a visible manufacturer's logo on the game pants.
 - d. A-1 is wearing a blue leg sleeve.
 - e. A-1 is wearing a visible blue undershirt under the white jersey.
 - f. A-1 is wearing a blue headband and white arm sleeve.

Lesson 3 - Referee Duties, Substitutions, Head Coaches' Rule and Scoring



NOTE: On this examination, "In the act of shooting" means the ball is still in the hands of the shooter.

| | | | | |
|-----|--|-----|-----|----|
| 1. | The referee has the authority to designate an umpire to make the opening toss to start the game. Is this correct? | 1. | Yes | No |
| 2. | The referee shall administer the throw-in to start the second, third and fourth quarters. Is this correct? | 2. | Yes | No |
| 3. | A-1 is called for a personal foul by the umpire. The referee does not believe a foul was committed and overturns the ruling made by the umpire. Is the referee correct? | 3. | Yes | No |
| 4. | A-2 is fouled and is exhibiting signs and symptoms of a concussion. The official has A-2 removed from the game. The head coach has 15 seconds to replace this player. Is this correct? | 4. | Yes | No |
| 5. | The score is tied 60-60 at the end of regulation time. The official has the scorer place 5 minutes on the clock for the overtime period. Is the official correct? | 5. | Yes | No |
| 6. | The assistant coach of Team A is assessed a technical foul and an indirect technical foul is charged to the head coach. Official informs the scorer that both fouls count toward reaching the bonus. Is the official correct? | 6. | Yes | No |
| 7. | A-1 has committed three personal fouls and been assessed a technical foul through the first 3 quarters. Early in the 4 th quarter. A-1 commits a foul on B-1. The official disqualifies A-1 from the game. Is the official correct? | 7. | Yes | No |
| 8. | A-1 was assessed a technical foul in the first quarter. In the 3 rd quarter, A-1 is assessed a second technical foul. The official disqualifies A-1 from further participation. Is this correct? | 8. | Yes | No |
| 9. | An "X" shall be placed in front of the official scorer on the floor out of bounds to help substitutes properly report to table to enter the game. Is this correct? | 9. | Yes | No |
| 10. | Team A substitutes 4 new players. Captain of Team B requests a defensive match-up. The official allows the match up. Is the official correct? | 10. | Yes | No |
| 11. | Team A is granted a time-out. After the warning horn has sounded, A-6 reports to the scorer's table to enter the game. Official denies A-6 from entering the game. Is the official correct? | 11. | Yes | No |
| 12. | A-6 substitutes for A-1. As A-6 enters the court, the coach of Team B is assessed a technical foul. Coach of Team A immediately sends A-1 back to the scorer's table to replace A-6 to attempt the free throws. The official beckons A-1 in the game ruling anyone can attempt the free throws for a technical foul including an entering substitute. Is the official correct? | 12. | Yes | No |
| 13. | Prior to B-1 attempting the first of two free throws, A-6 reports to the scorer's table to replace A-1. Official beckons A-6 into the game. Is the official correct? | 13. | Yes | No |
| 14. | B-5 fouls A-1, who is awarded two free throws. It's B-5's fifth foul. B-6 reports and replaces B-5. After B-6 enters the court, A-6 reports to replace A-5. Scorer sounds the horn. Official denies A-6 from entering the game. Is the official correct? | 14. | Yes | No |
| 15. | A-6 legally enters the court to replace A-5. As A-5 is leaving the court, A-5 is assessed a technical foul. Official rules A-5 is bench personnel and charges an indirect technical foul to the head coach. Is the official correct? | 15. | Yes | No |
| 16. | Substitute A-6 is at the table waiting to enter the game. A-6 enters the court without being beckoned by an official. The official assesses A-6 a technical foul and an indirect to the head coach. Is the official correct? | 16. | Yes | No |
| 17. | A-1's try is in flight as time expires in the third quarter. The ball enters basket. Official counts the goal. Is the official correct? | 17. | Yes | No |
| 18. | A-2 dunks, the ball hits the bottom of the net and pops back out of the basket. Official allows play to continue. Is the official correct? | 18. | Yes | No |
| 19. | While the ball is in flight on a try for goal, time expires in the first quarter. Before the try ends, B-1 is charged with a technical foul. Official starts the second quarter by administering the penalty for the technical foul. Is the official correct? | 19. | Yes | No |
| 20. | A-1 is fouled as time expires in the second quarter and awarded a one-and-one. As the official is reporting the foul a technical foul is assessed against Team B's coach. Official awards A-1 his/her one-and-one and starts the third quarter by administering the technical foul. Is the official correct? | 20. | Yes | No |
| 21. | While in the act of shooting and prior to releasing the ball, A-1 is fouled as the signal sounds indicating time has expired in the quarter. A-1 continues the motion and scores. Official counts the goal and awards one free throw. Is the official correct? | 21. | Yes | No |
| 22. | With 3 tenths of a second on the game clock, A-1's throw-in is tapped toward Team A's basket by A-2. While the ball is in flight time expires. The try is successful. Official counts the goal. Is the official correct? | 22. | Yes | No |
| 23. | A-1 is fouled as time expires in the fourth quarter with Team B leading 65-63. A-1 is awarded two free throws. A-1's first try is unsuccessful. Official rules A-1 will not receive the second free throw because the outcome of the game has already been decided. Is the official correct? | 23. | Yes | No |

**Referee Duties, Substitutions, Head Coaches' Rule and Scoring
REVIEW SHEET of Lesson 3**



1. The opening toss must be conducted by the referee. True _____ False _____
2. Does the referee have the authority to decide whether a goal shall count, if the officials disagree?
Yes _____ No _____
3. Which of the following scenarios would a player be disqualified during a game?
(circle all that apply)
 - a. A-1 commits 4 personal fouls and 1 technical foul.
 - b. A-1 commits a flagrant personal foul.
 - c. A-1 commits 2 technical fouls.
 - d. A-1 commits an intentional personal foul and a technical foul.
4. When a player is disqualified, the official should notify the coach of the disqualification, and then have the timer start the 15 second interval of time before notifying the player that he/she is disqualified. True _____ False _____
5. A player exhibits signs or symptoms of a concussion; they should be removed from the game immediately. True _____ False _____
6. When bench personnel gets charged with a technical foul, an indirect foul gets charged to the head coach. True _____ False _____
7. In which of the following scenarios would a head coach be ejected from a game?
(circle all that apply)
 - a. Head coach has 2 direct technical fouls.
 - b. Head coach commits a flagrant foul.
 - c. Head coach 2 indirect technical fouls.
 - d. Head coach has 1 direct technical and 2 indirect technicals.
8. Can a substitute enter the game before the first free throw of two after a shooting foul?
Yes _____ No _____
9. When does a player who has been substituted for become bench personnel? _____
10. A-1 is injured and directed to leave the game, may Team A take a time out to keep A-1 in the game? Yes _____ No _____
11. If play resumes with a throw-in with 3 tenths or less on the game clock, can a goal be scored on a try for goal? Yes _____ No _____
12. In a high school varsity game, what is the length of time for
 - a. Pre-Game Warmups _____ minutes.
 - b. Each quarter _____ minutes.
 - c. Between quarters _____ minutes.
 - d. Between halves _____ minutes.
 - e. Overtime period _____ minutes.

Lesson 4 – Live Ball, Control, Jump Ball and Time Outs



NOTE: On this examination, “In the act of shooting” means the ball is still in the hands of the shooter.

| | | | |
|--|-----|-----|----|
| 1. On a jump ball, the ball becomes live as soon as the tossed ball leaves the referees hands. Is this correct? | 1. | Yes | No |
| 2. As the official is bouncing the ball to thrower-in A-1, B-1 requests a time-out. Official denies the request, stating when he/she released the ball, the ball became live. Is the official correct? | 2. | Yes | No |
| 3. As the official bounces the ball to free thrower A-1 and before A-1 catches the ball, the ball is dead. Is this correct? | 3. | Yes | No |
| 4. The ball becomes dead after a made goal or free throw. Is this correct? | 4. | Yes | No |
| 5. To start the game, each team should be trying for goal at the basket closest to their bench. Is that correct? | 5. | Yes | No |
| 6. After the whistle is blown but prior to the ball leaving the official's hands on a jump ball, B-2 moves onto the circle. Official rules this is a legal play. Is the official correct? | 6. | Yes | No |
| 7. Jumper A-1 catches the ball after the ball has been tapped, but before the jump ball has ended. Official rules this is a violation, awards Team B the ball and sets the arrow toward Team A's basket. Is the official correct? | 7. | Yes | No |
| 8. The 8 non-jumpers take positions on the restraining circle. As the official is ready to toss the ball, B-3 backs straight off the circle. A-4, who was next to B-3, moves into the vacated spot. Official rules a violation on A-4. Is the official correct? | 8. | Yes | No |
| 9. After the referee tosses the ball for a jump ball and before the ball is tapped, A-2 moves into an unoccupied space on the circle. Official rules this is a violation. Is the official correct? | 9. | Yes | No |
| 10. The jump ball ends as soon as it is tapped by one of the jumpers. Is this correct? | 10. | Yes | No |
| 11. The clock starts on a jump ball as soon as it is legally touched by one of the jumpers. Is this correct? | 11. | Yes | No |
| 12. A-1 jumps to attempt a shot. B-1 is able to put his/her hands on the ball and prevents A-1 from releasing the ball. The official rules this is a held ball. Is this correct? | 12. | Yes | No |
| 13. A-1 and B-1 simultaneously have their hands placed on the ball. A-1 is able to secure control of the ball away from B-1 without undue roughness. The official rules this is a held ball. Is the official correct? | 13. | Yes | No |
| 14. The official scorer informs the referee that the AP arrow is kept on the scoreboard at the end of the gym. The referee informs home management that an AP arrow is required to be located at the scorers' table. Is the referee correct? | 14. | Yes | No |
| 15. The coach for Team A requests that an error in the direction of the AP arrow be rectified. The error cannot be found. The coach of Team A is assessed a technical foul. Is this correct? | 15. | Yes | No |
| 16. During the jump ball to start the game. A-3 secures the ball and begins to dribble up the court. The scorer turns the arrow toward Team B's basket as soon as A-3 secured control. Is this correct? | 16. | Yes | No |
| 17. On a jump ball, to start the overtime, B-3 fouls A-3 before the ball was secured by either team. It is Team B's 7 th foul. The official has the scorer set the arrow towards Team B's basket as soon as it is at the disposal of A-3 for the first free throw. Is the official correct? | 17. | Yes | No |
| 18. Before the game, the coach of Team B is assessed a technical foul. The official has the arrow set towards Team B's basket as soon as the ball is at the disposal of A-1 for the first free throw for the technical foul. Is the official correct? | 18. | Yes | No |
| 19. Jumper B-1 catches the opening toss before the jump ball has ended. The official rules this is a violation and immediately has the scorer set the arrow toward Team A's basket. Is the official correct? | 19. | Yes | No |
| 20. On the opening tap to start the game A-2 and B-2 simultaneously bat the ball out of bounds. The official has A-2 and B-2 re-jump to start the game. Is the official correct? | 20. | Yes | No |
| 21. Team A requests a 30-second time-out. Scorer informs the official that Team A has no 30-second time-outs remaining. Official charges Team A with a 60-second time-out, if they have any remaining. Is the official correct? | 21. | Yes | No |
| 22. During a 30 second time-out the coach of Team A allows his/her players to sit on the bench. Official informs the coach that players must remain standing within the confines of the bench area. Is the official correct? | 22. | Yes | No |
| 23. Team A is granted a 30 second time-out. Official instructs the timer to sound a warning horn 15 seconds prior to the 30 seconds expiring. Is the official correct? | 23. | Yes | No |
| 24. Airborne player A-1 intercepts a pass near the side line. A-1 seeing he/she will land out of bounds, verbally requests a time-out. Official grants the request. Is the official correct? | 24. | Yes | No |

**Live Ball, Control, Jump Ball and Time Outs
REVIEW SHEET of Lesson 4**



1. What 3 ways can the ball become live?
 - a. _____
 - b. _____
 - c. _____

2. When does a ball become live on a:
 - a. Free Throw _____
 - b. Jump Ball _____
 - c. Throw-In _____

3. When the referee is ready to toss the ball for the jump ball to start the game, non-jumpers shall not?
 - a. _____
 - b. _____

4. Until the tossed ball is touched by one or both of the jumpers, non-jumpers shall not:
 - a. _____
 - b. _____

5. Which of the following would be a violation on the jumper: (circle all that apply)
 - a. Touching the tossed ball before it reaches its highest point.
 - b. Leaving the center restraining circle before the ball has been touched.
 - c. Catching the jump ball.
 - d. Touching the ball more than twice before the jump ball ends.

6. The jump ball ends when it touches: (circle all that apply)
 - a. One of the eight non-jumpers
 - b. An official
 - c. The floor
 - d. The basket
 - e. The backboard

7. Should the AP arrow be pointed at the team benches _____ or baskets _____?

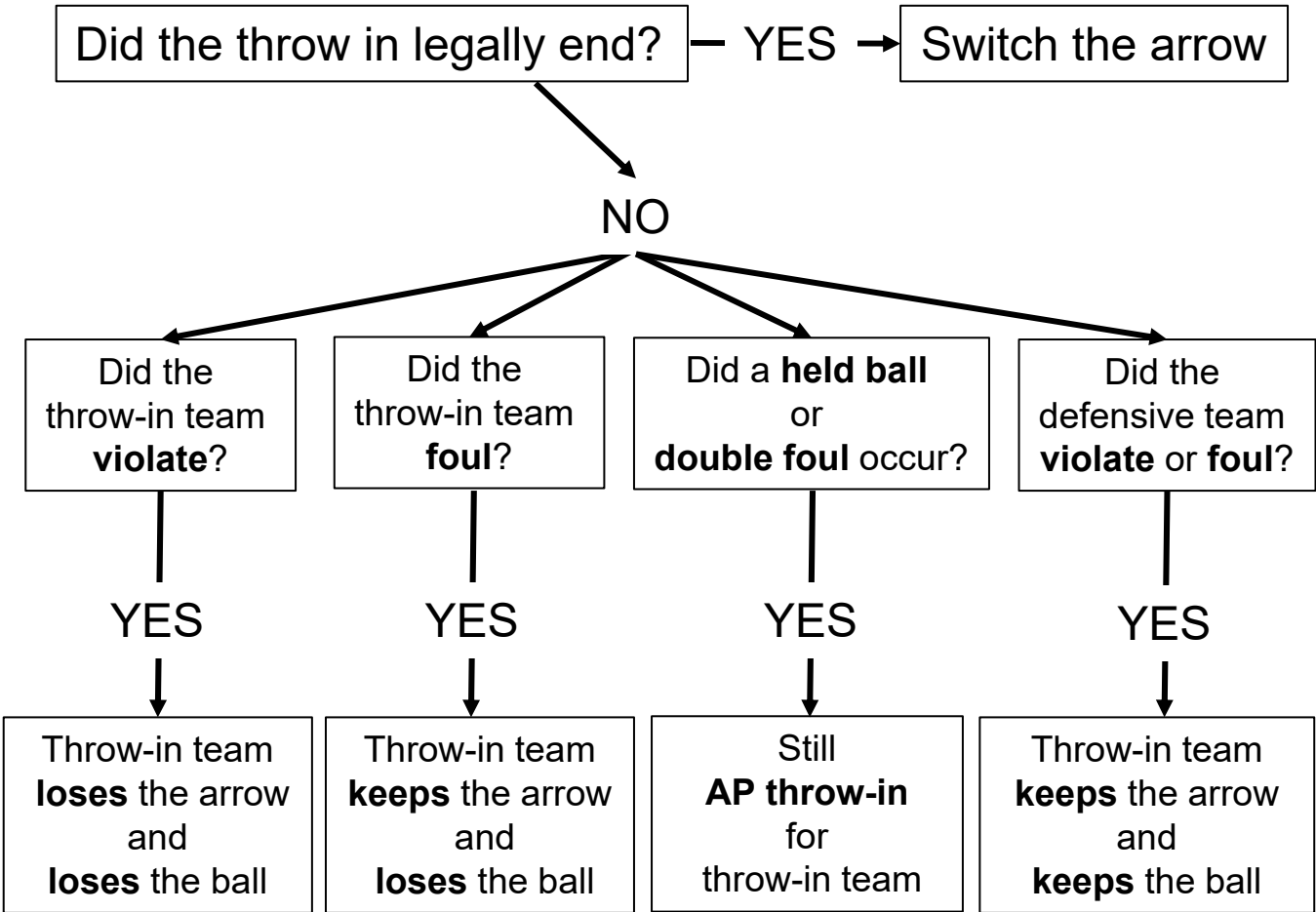
8. On the opening toss, A-1 taps the ball directly out of bounds.
 - a. Which team will get the arrow? _____
 - b. When will it be set? _____

9. Just after the ball leaves the referee's hands, on a jump ball, to start an overtime period, B-1 fouls A-1, Team A is in the bonus.
 - a. Which team will get the arrow? _____
 - b. When will it be set? _____

10. A team is entitled to _____ 60 second time-outs and _____ 30 second time-outs during a regulation game.

11. Assuming Team A has possession of the ball or the ball is at their disposal, who may call time out: (circle all that apply)
 - a. Player on the court
 - b. Head Coach
 - c. Assistant Coach
 - d. Team member on the bench

Alternating Possession Scenarios



Lesson 5 – Throw-ins, Warnings, and Alternating Possession



NOTE: On this examination, “In the act of shooting” means the ball is still in the hands of the shooter.

| | | | | |
|-----|---|-----|-----|----|
| 1. | B-2 scores. Team A is not readily making a thrower available to make a throw-in. The official begins the five second count. Is the official correct? | 1. | Yes | No |
| 2. | During a designated spot throw-in, A-1 moves directly backward 2 feet to avoid the defensive pressure. The official rules this is a violation for leaving the designated spot. Is the official correct? | 2. | Yes | No |
| 3. | The ball is awarded to A-1 for a throw-in. A-1 makes a long pass down the court. Before the ball is legally touched on the court, the official reaches the count of five and rules a throw-in violation on Team A. Is the official correct? | 3. | Yes | No |
| 4. | The official mistakenly awards Team A the ball for the throw-in. As A-2 is dribbling up court the official recognizes the mistake and blows the whistle. The official takes the ball back to the original throw-in spot, awards the ball to Team B and puts the consumed time back on the game clock. Is the official correct? | 4. | Yes | No |
| 5. | A-3 and B-3 simultaneously knock the ball out of bounds. The official uses the alternating possession arrow to resume play. Is the official correct? | 5. | Yes | No |
| 6. | Following a violation, thrower-in A-1, jumps into the air and forward toward the boundary line. A-1's body has crossed the plane of the boundary line but still has one foot over the designated spot prior to releasing the ball. Official rules this is a legal throw-in. Is the official correct? | 6. | Yes | No |
| 7. | Following a score, A-1 has the ball out of bounds for the throw-in, when B-1 breaks the plane of the boundary line. The official issues a warning to Team B. Official rules Team A, no longer has the privilege of moving along the end line. Is the official correct? | 7. | Yes | No |
| 8. | During an alternating possession throw-in by Team A, A-2 fouls B-2 before the throw-in is legally touched and before the bonus is in effect. The official awards Team B the ball at the nearest spot of the foul and instructs the scorer that the arrow stays with Team A. Is the official correct? | 8. | Yes | No |
| 9. | During an alternating possession throw-in, the official mistakenly awards the ball to Team A instead of Team B. Team A completes the throw in before the official recognizes the mistake. The official cannot correct the error of awarding the ball to the wrong team, but the arrow will remain with Team B. Is the official correct? | 9. | Yes | No |
| 10. | During an alternating possession procedure throw-in, Team A commits a throw-in violation. The official awards Team B the ball and instructs the scorer to turn the arrow toward Team B's basket. Is the official correct? | 10. | Yes | No |
| 11. | During an alternating possession throw-in, thrower-in A-1 breaks the plane of the boundary line with the ball. B-1 grasps the ball and neither player can get the ball from the other. The official rules a held ball and gives the ball back to Team A for an alternating possession throw-in. Is the official correct? | 11. | Yes | No |
| 12. | Team B scores. A-1's throw-in is batted back out of bounds, over the end line. The official awards the ball back to Team A and rules Team A still has the privilege of moving along the end line. Is the official correct? | 12. | Yes | No |
| 13. | Following a field goal by Team B, and before the throw-in is completed, B-2 commits a common foul near the end line. Team A is not in the bonus. The official awards the ball back to Team A and rules Team A still has the privilege of moving along the end line. Is the official correct? | 13. | Yes | No |
| 14. | Following a field goal by Team B and before the throw-in is completed, B-2 commits an intentional personal foul near the end line. Team A is not in the bonus. The official awards the ball back to Team A and rules Team A still has the privilege of moving along the end line. Is the official correct? | 14. | Yes | No |
| 15. | Following a violation by Team B, Team A delays, by not making a thrower readily available. The official charges Team A with a technical foul. Is the official correct? | 15. | Yes | No |
| 16. | After a timeout, Team A is still huddling in the bench area and does not make a thrower readily available to complete the throw-in. The official charges Team A with a technical foul. Is the official correct? | 16. | Yes | No |
| 17. | While A-1's second free throw of two is in flight, the official assesses a double personal foul. The ball enters the basket. The official counts the free throw and resumes play by awarding Team B a throw-in. Is the official correct? | 17. | Yes | No |
| 18. | Following a goal by A-1, the coach for Team B confronts the trail official and argues that A-1 traveled. May the official issue a warning to the head coach? | 18. | Yes | No |
| 19. | The official issues a warning to the head coach for standing outside the coaching box. The warning must be recorded in the scorebook and reported to the head coach. Is this correct? | 19. | Yes | No |
| 20. | The head coach uses profane language at the official. The official issues a warning to the head coach and has it recorded in the score book. Is the official correct? | 20. | Yes | No |



Throw-ins, Warnings and Alternating Possession REVIEW SHEET of Lesson 5

1. In which of the follow situations has disposal occurred? (circle all that apply)
 - a. The official has handed the ball to thrower A-1.
 - b. Thrower A-1 has caught the ball after it was bounced to him/her by an official.
 - c. After appropriate signals have been given, the official has placed the ball on the floor at the throw-in spot.
 - d. The ball is readily available after a made basket and the throw-in team has not made an attempt to recover the ball.

2. The throw-in and throw-in count begin when the ball is at the disposal of the team entitled to the throw in. True _____ False _____

3. Which of the following are considered to be **throw-in violations** on Team A?
 - a. After a violation, Thrower A-1 does not throw the ball directly on the court so it can be legally touched by another player.
 - b. Thrower A-1 does not release the ball, on a throw-in within 5 seconds.
 - c. After a violation, Thrower A-1 moves laterally 6 feet before releasing the ball onto the court.
 - d. After a made basket, A-1 and A-2 step out of bounds off the endline, A-1 picks up the ball and passes the ball to A-2, while both players are still out of bounds.
 - e. After a made basket, Thrower A-1 releases the ball and B-2 catches the pass while standing on the endline.
 - f. Thrower A-1 carries the ball onto the court.
 - g. Thrower A-1 releases the ball, but is the first player to touch the ball on the court.
 - h. Thrower A-1 throws the ball directly into the basket.
 - i. After a violation, A-1 has the ball out of bounds for a throw-in and A-2 steps out of bound to replace A-1 for a throw in.

4. Where will the spot of the throw-in be:
 - a. Technical foul _____
 - b. Common foul _____
 - c. Intentional foul _____

5. If there is a foul by defense, during an AP throw-in, is the arrow reversed? Yes _____ No _____

6. If there is a foul by offense, during an AP throw-in, is the arrow reversed? Yes _____ No _____

7. If there is a violation by defense, during an AP throw-in, is the arrow reversed?
Yes _____ No _____

8. If there is a violation by the offense, during an AP throw-in, is the arrow reversed?
Yes _____ No _____

9. What are the 4 warnings for Delay?
 - a. _____
 - b. _____
 - c. _____
 - d. _____

Lesson 6 – Shooting, Dribbling and Violations



NOTE: On this examination, “In the act of shooting” means the ball is still in the hands of the shooter.

| | | | |
|--|-----|-----|----|
| 1. Airborne A-1 has released the ball on a try for goal when fouled by B-1. The official rules A-1 was in the act of shooting. Is the official correct? | 1. | Yes | No |
| 2. A-1 is fouled while tapping a rebound toward his/her basket. Ball enters basket. The official counts the goal and awards A-1 one free throw. Is the official correct? | 2. | Yes | No |
| 3. On a try by A-1, the ball is bouncing directly above the ring, when B-1 touches the net. The official rules this basket interference. Is the official correct? | 3. | Yes | No |
| 4. A-1's field goal attempt is on the ring, when B-1 intentionally slaps the backboard causing it to vibrate. The official rules this basket interference and awards two points to Team A. Is the official correct? | 4. | Yes | No |
| 5. A-1's throw-in is directly above the basket, in the imaginary cylinder, when B-1 touches the ball. Official rules this basket interference. Is the official correct? | 5. | Yes | No |
| 6. A-1, from behind the 3 point line, throws the ball toward his/her basket. The ball is on its downward flight outside the cylinder above the ring level and in the judgment of the official has a chance of entering the basket, when B-2 bats the ball away. The official rules this is goaltending. Is the official correct? | 6. | Yes | No |
| 7. A-2 receives a pass from A-1. A-2, after catching the pass, fumbles it, recovers, then dribbles several feet and ends the dribble. A-2 fumbles again and recovers the fumble. The official rules this is a violation. Is the official correct? | 7. | Yes | No |
| 8. A-1 ends his/her dribble and makes a bounce pass to A-2. A-2 does not see the pass, so A-1 alertly runs over and recovers the ball. The official rules this is a legal play. Is the official correct? | 8. | Yes | No |
| 9. While A-1 is dribbling, the ball hits B-1's foot and bounces away from A-1. A-1 recovers the ball by catching it and starts a new dribble. The official rules it is a legal play. Is the official correct? | 9. | Yes | No |
| 10. A-1 lifts his/her pivot foot before starting a dribble. The official rules this is traveling. Is the official correct? | 10. | Yes | No |
| 11. A-1 lifts his/her pivot foot to shoot. The official rules this is traveling. Is the official correct? | 11. | Yes | No |
| 12. Airborne A-1 catches the ball, lands on one foot, jumps off that foot and then lands on both feet simultaneously. The official rules this is a traveling violation. Is the official correct? | 12. | Yes | No |
| 13. B-1 sticks his/her leg out to block A-1's pass to A-2. The ball hits B-1's leg. The official rules this is a legal play. Is the official correct? | 13. | Yes | No |
| 14. A-1's pass to A-2 is off line and hits stationary B-2 in the leg. The official rules this is a kicking violation. Is the official correct? | 14. | Yes | No |
| 15. While A-1 is dribbling in the frontcourt, A-2 has been standing in the lane for 3 seconds. The official rules this is a 3 second violation. Is this correct? | 15. | Yes | No |
| 16. While A-1 is dribbling in the frontcourt, B-1 bats the ball away. While the ball is loose the official calls a 3-second violation on A-3, who has been standing in the lane for 3 seconds. Is the official correct? | 16. | Yes | No |
| 17. A-3 has been in the lane for 2.5 seconds, receives a pass from A-1. A-3 immediately drives the lane and tries for goal. A-3 has been in the lane, over 3 seconds, before the try was released. The official rules a 3-second violation. Is this correct? | 17. | Yes | No |
| 18. A-1 is dribbling in the backcourt when B-1 bats the ball away. The official continues the 10 second count. Is the official correct? | 18. | Yes | No |
| 19. A-1, who is dribbling from the backcourt to the frontcourt, has both feet in the frontcourt while dribbling in the backcourt. The official continues the 10 second count. Is the official correct? | 19. | Yes | No |
| 20. Thrower-in A-1 releases the ball on a pass, by rolling it up the floor, in the backcourt. As the ball is rolling along the floor, the official starts the 10 second count. Is the official correct? | 20. | Yes | No |
| 21. B-1 rebounds a missed shot at Team A's basket and passes the ball to a teammate near the division line. A-1 jumps from his/her frontcourt and secures control while both feet are off the floor. A-1 lands in the backcourt. Official rules this is a legal play. Is the official correct? | 21. | Yes | No |
| 22. A-1's throw-in is batted into the backcourt by A-2 from the frontcourt. A-1 is the first to touch the ball in backcourt. The official rules this is a backcourt violation. Is the official correct? | 22. | Yes | No |
| 23. B-1 jumps from his/her frontcourt and intercepts A-1's throw-in pass. B-1 returns to the floor in the backcourt. The official rules this is a legal play. Is the official correct? | 23. | Yes | No |
| 24. A-1's throw-in is caught by A-2, while A-2 has one foot touching the floor, in the frontcourt. A-2, then places the other foot down in the backcourt. The official rules this is a backcourt violation. Is the official correct? | 24. | Yes | No |
| 25. A-1 is holding the ball in Team A's frontcourt near the division line. A-1's bounce pass to A-2, touches the division line and then touches the floor in the frontcourt. A-2, in the frontcourt, catches the ball. The official rules this a legal play. Is the official correct? | 25. | Yes | No |

**Shooting, Dribbling and Violations
REVIEW SHEET of Lesson 6**



1. Is it possible for an airborne shooter to have the ball in his/her hand? Yes _____ No _____
2. Is an airborne shooter in the act of shooting? Yes _____ No _____
3. Which of the following is basket interference? (circle all that apply)
 - a. B-2 touches the ball, while it is on the basket ring.
 - b. B-2 touches the net, while the ball is in the basket.
 - c. B-2 touches the ball, while it is in the imaginary cylinder above the basket ring.
 - d. B-2 slaps the backboard causing the ball to bounce off the basket ring.
 - e. B-2 reaches through the basket from below and blocks a shot outside the cylinder.
 - f. B-2 pull down the movable ring and it contacts the ball before returning to its original position.
4. A thrown ball which is in its downward flight, entirely above ring level and has the possibility of entering the basket which is then touched by a player, would constitute a goaltending violation.
True _____ False _____
5. A dribble begins, only after a player in control, intentionally pushes, throws or bats the ball to the floor. True _____ False _____
6. A fumble is accidental loss of player control, when a ball unintentionally drops or slips from a player's grasp. True _____ False _____
7. In which of the following situations would it be considered traveling? (circle all that apply)
 - a. A-1 lifts pivot foot to shoot.
 - b. A-1 lifts pivot foot to pass.
 - c. A-1 lifts pivot foot to dribble.
8. When a player catches the ball with one foot on the floor, does that foot automatically become the pivot foot? Yes _____ No _____
9. Is it a violation, for a player who is holding the ball, to touch the floor with their hand?
Yes ___ No ___
10. Is it a violation, for a player who is holding the ball, to touch the floor with their knee?
Yes ___ No ___
11. Is it a kicking violation, if a player accidentally contacts the ball with any part of their leg or foot?
Yes _____ No _____
12. A team shall not be in control of the ball in the backcourt for 10 seconds. True _____ False _____
13. Which of the following is a backcourt violation? (circle all that apply)
 - a. On a throw-in by A-1, A-2 is airborne from the front court, catches the ball and lands in backcourt.
 - b. On a throw-in by A-1, A-2, who has one foot touching the frontcourt, catches the ball and then steps in the backcourt.
 - c. On a jump ball, A-2 airborne from the frontcourt, catches the ball and lands in backcourt.
 - d. B-2 makes an outlet pass, that is intercepted by A-1, who is airborne from his/her frontcourt and lands in backcourt.

Lesson 7 – Screening, Guarding and Contact



NOTE: On this examination, “In the act of shooting” means the ball is still in the hands of the shooter.

| | | | | |
|-----|--|-----|-----|----|
| 1. | A-1 is dribbling near the sideline. B-1 takes a position with two feet on the floor facing A-1, contact ensues on B-1’s torso and he/she is displaced. The official rules a player control foul on A-1. Is the official correct? | 1. | Yes | No |
| 2. | A-1 is dribbling near the sideline. B-1 takes a position facing A-1, with one foot on the playing court and one foot on the boundary line, contact ensues on B-1’s torso and he/she is displaced. The official rules a player control foul on A-1. Is the official correct? | 2. | Yes | No |
| 3. | A-1 catches the ball while in the air and returns to the floor on one foot. B-1 moves into A-1’s path getting both feet on the floor facing A-1 but does not give A-1 any time or distance to stop. A-1 turns and prior to placing the other foot to the floor contacts B-1. Official calls blocking foul on B-1. Is the official correct? | 3. | Yes | No |
| 4. | A-5 is dribbling in the frontcourt and B-1 is within six feet of A-1. The official starts a 5 second count. Is the official correct? | 4. | Yes | No |
| 5. | A-5 is dribbling in the frontcourt and closely guarded by B-1. As A-5 continues his/her dribble, B-1 and B-2 switch guarding assignments so that A-5 remains closely guarded. When the switch occurred the official started a new 5 second count. Is the official correct? | 5. | Yes | No |
| 6. | Player A-1, closely guarded in the frontcourt, holds the ball for 4 seconds, then dribbles for 1 second. The official rules this a 5-second closely guarded violation. Is the official correct? | 6. | Yes | No |
| 7. | B-2 fouls A-1 while he/she is in the act of shooting. A-1 continues the throwing motion and scores. Official penalizes the foul and counts the goal. Is the official correct? | 7. | Yes | No |
| 8. | A-2 fouls B-2 while A-1 is in the act of shooting. A-1 continues the throwing motion and scores. Official penalizes the foul and counts the goal. Is the official correct? | 8. | Yes | No |
| 9. | After a made goal by A-1 and before the throw-in begins. B-2 pushes A-2 and is charged with a foul. The official rules this is a personal foul. Is the official correct? | 9. | Yes | No |
| 10. | While A-1 is dribbling, A-2 commits a personal foul on B-2. Team B is in the bonus. Official awards B-2 a one and one. Is the official correct? | 10. | Yes | No |
| 11. | While the ball is in flight on a throw-in by A-1, A-2 commits a common foul on B-2. Team B is in the bonus. The official rules it a team control foul and awards no free throws. Is the official correct? | 11. | Yes | No |
| 12. | Airborne shooter A-1 flagrantly fouls B-1. Ball enters basket. Official ejects A-1 and cancels the goal. Is the official correct? | 12. | Yes | No |
| 13. | A-1 is dribbling above the semicircle, when A-2 pushes B-2 in the lane. Team B is in the bonus. Official rules a team control foul on A and has B-2 shoot a one and one. Is the official correct? | 13. | Yes | No |
| 14. | As A-1 drives to the basket to take a lay-up. B-1, comes from behind, while playing the ball and causes excessive contact on A-1. The official rules this is an intentional foul. Is the official correct? | 14. | Yes | No |
| 15. | As A-1 drives to the basket to take a lay-up. B-1, comes from behind, and while trying to play the ball causes excessive contact on A-1. A-1 makes the lay-up. The official rules this an intentional foul. The official awards A-1 one free throw and Team A the ball at the spot of the foul. Is the official correct? | 15. | Yes | No |
| 16. | A-1 is charged with an intentional personal foul against B-1. The official awards B-1 two free throws and awards Team B the ball, out of bounds nearest the spot of the foul. Is the official correct? | 16. | Yes | No |
| 17. | While A-1’s try is in flight, A-2 pushes B-2. The official rules this a team control foul. Is this correct? | 17. | Yes | No |
| 18. | A-1 is in the frontcourt dribbling, when B-3 is charged with an unsporting technical foul. The official awards Team A two free throws and resumes play with a throw-in, for Team A at the division line. | 18. | Yes | No |
| 19. | After a made goal, A-2 and B-2 commit intentional technical fouls against each other. The official awards each team with two free throws and uses the AP arrow to resume play. Is the official correct? | 19. | Yes | No |
| 20. | While A-2 is dribbling, player A-1 sets a rear screen closer than one normal step, on stationary B-2. As B-2 turns and, prior to placing a foot to the floor, contacts A-1. Official rules this is a team-control foul on A-1. Is the official correct? | 20. | Yes | No |
| 21. | A player of Team A is called for an unsporting technical foul. The official awards two free throws to Team B and resumes play with a throw-in for Team B at the division line. | 21. | Yes | No |
| 22. | In the first quarter, player A-1 is assessed a technical foul. In the third quarter, player A-1 is assessed a technical for unsporting behavior. The official ejects player A-1. Is the official correct? | 22. | Yes | No |
| 23. | A-1 goes up for an uncontested dunk and grasps the ring. The official rule this a legal play. Is the official correct? | 23. | Yes | No |
| 24. | A-1 throws a punch and hits B-1, B-1 retaliates with a punch but misses. The official charges both players with a flagrant foul, does not award any free throws and puts the ball in play at the point of interruption. Is the official correct? | 24. | Yes | No |
| 25. | A-1’s try for goal is in flight, when B-2 excessively swings his/her arms and elbows without contact. Official charges B-2 with a technical foul. Is the official correct? | 25. | Yes | No |

**Screening, Guarding, and Contact
REVIEW SHEET of Lesson 7**



1. What two things must a defender do, to obtain legal guarding position?
 - a. _____
 - b. _____
2. While maintaining legal guarding position, the defender must keep their feet in contact with the floor. True _____ False _____
3. While maintaining legal guarding position, the defender must continue facing the opponent. True _____ False _____
4. When guarding an opponent with the ball, no time and distance is required to obtain legal guarding position. True _____ False _____
5. If the opponent is airborne, with or without the ball, the defender must have obtained legal guarding position before the opponent left the floor. True _____ False _____
6. The closely guarded count only occurs in the frontcourt, if a defensive player is within 6 feet of a ball handler. True _____ False _____
7. Continuous motion applies to tries or taps for field goals and free throws, but has no significance, unless there is a foul by any defensive player, during a try/tap for goal. True _____ False _____
8. Contact fouls, during a live ball, are considered what type of foul?
Personal _____ Technical _____
9. Contact fouls, during a dead ball, are considered what type of foul?
Personal _____ Technical _____
10. A player who is charged with a flagrant foul (personal or technical) is disqualified.
True _____ False _____
11. A player, who commits two technical fouls in a game, would be disqualified.
True _____ False _____
12. Can a player commit an illegal screen, if there is no contact? Yes _____ No _____
13. When screening a stationary opponent, within the visual field, can the screener be anywhere short of contact? Yes _____ No _____
14. Can a player who becomes a screener, outside the visual field of a stationary opponent, be anywhere short of contact? Yes _____ No _____
15. Are time and distance factors in obtaining a legal screening position? Yes _____ No _____
16. Is fighting always a flagrant act? Yes _____ No _____
17. If A-1 excessively swings their elbows without contacting an opponent, it is a violation?
True _____ False _____

Lesson 8 – Free Throws, Point of Interruption and Correctable Error



NOTE: On this examination, “In the act of shooting” means the ball is still in the hands of the shooter.

| | | | | |
|-----|---|-----|-----|----|
| 1. | A-1 is to attempt a free throw and B-1 and B-2 occupy the first marked lane spaces. Team A chooses not to occupy the second marked lane spaces. B-3 and B-4 request permission to occupy these spaces. Official denies the request. Is the official correct? | 1. | Yes | No |
| 2. | During A-1's first free throw of two, Team A has two players and Team B has four players occupying the marked lane spaces. Prior to the second free throw, a Team A player vacates a lane space. B-5, who was behind the 3 point arc, moves into the vacant space. The official does not recognize that B-5 has occupied the space until the ball is live. The official gives the delayed violation signal. A-1's free throw is unsuccessful. Official rules this is a violation and awards A-1 a substitute free throw. Is the official correct? | 2. | Yes | No |
| 3. | After the ball has become live for A-1's free throw attempt, the official recognizes that A-5 and B-5 are occupying the first lane spaces between the neutral zone marks and the end line. Official rules this is a double free throw violation. Is the official correct? | 3. | Yes | No |
| 4. | Prior to A-1 releasing the ball on a free throw, B-2 enters the lane followed by A-2. The official rules this is a double free throw violation. Is the official correct? | 4. | Yes | No |
| 5. | Prior to the release of A-1's free throw, B-1 commits a marked lane space violation followed by A-4 breaking the plane of the 3pt arc. A-1's free throw is successful. The official penalizes only the violation on B-1 and counts the goal. Is the official correct? | 5. | Yes | No |
| 6. | Prior to the release of A-1's free throw, B-1 commits a marked lane space violation. A-1's free throw misses the ring. The official rules this is a double free throw violation. Is the official correct? | 6. | Yes | No |
| 7. | A-1 is awarded two free throws. On the first free throw, a double violation is committed. Official cancels A-1's first free throw and awards A-1 his/her second free throw and players will play off the make or miss. Is the official correct? | 7. | Yes | No |
| 8. | Prior to the release of A-1's free throw, B-1 commits a marked lane space violation. A-1's free throw is successful. The official ignores the violation and the goal counts. Is the official correct? | 8. | Yes | No |
| 9. | Free thrower A-1 fakes a free throw attempt, before releasing the ball on a free throw. No team B players violate the free throw provisions. The free throw is successful. The official ignores the fake and counts the goal. Is the official correct? | 9. | Yes | No |
| 10. | During a free throw attempt by A-1, B-3 in a marked lane space, enters the free-throw semicircle before the free throw ends. The free throw is unsuccessful. The official rules this is a violation on B-3 and awards a substitute throw. Is the official correct? | 10. | Yes | No |
| 11. | B-1 fouls A-1 and A-1 is injured on the play. Team A is in the bonus. A-6 reports for A-1 and is beckoned into the game. Prior to A-6 entering the semi-circle to attempt the free throws, the coach has second thoughts and sends A-7 to replace A-6. Official denies A-7 from entering the game to replace A-6. Is the official correct? | 11. | Yes | No |
| 12. | A-1 is selected to attempt the free throws, for a technical foul. After A-1 misses the first attempt, the coach requests A-2 to attempt the second free throw. Official rules the same player must attempt both free throws. Is the official correct? | 12. | Yes | No |
| 13. | Following a time-out, free thrower A-1 delays by not entering the semi-circle. Official charges A-1 with a technical foul. Is the official correct? | 13. | Yes | No |
| 14. | Following a timeout, both teams continue to huddle. Official places the ball on the floor for a free throw by Team A. After 10 seconds, the official blows the whistle and rules a double violation. Is the official correct? | 14. | Yes | No |
| 15. | During a foul reporting sequence, the official is ready to administer the first of two free throws to A-1 but the first two marked lane spaces above the neutral zone marks are not occupied. Official asks Team B to occupy the spaces. Team B players continue to delay. Official charges Team B with a technical foul. Is the official correct? | 15. | Yes | No |
| 16. | A-1 is awarded one free throw but the administering official erroneously tells the players that A-1 will shoot two free throws. A-1's first attempt is missed. A-2 grabs the rebound and scores as the other players make no attempt to rebound the ball. After conferring, the officials count the goal. Are the officials correct? | 16. | Yes | No |
| 17. | The official fails to signal a successful 3pt goal by A-2. B-1 passes to B-2 who scores. Before the ball is at the disposal of Team A, the error is recognized. Official rules the time frame to correct has expired. Is the official correct? | 17. | Yes | No |
| 18. | The official clearly signals on a successful 3pt goal by A-2. The scorer only awards two points to Team A. B-1 passes to B-2 who scores. While the ball is at the disposal of Team A, the mistake is recognized. Official rules the time frame to correct has expired. Is the official correct? | 18. | Yes | No |



Free Throws, Point of Interruption and Correctable Error REVIEW SHEET of Lesson 8

1. The free throw begins, when the ball is released by the official, on the bounce pass to the free thrower.
True_____ False_____
2. Opponents of the free thrower must occupy the lower lane spaces above the neutral zones nearest the endline on every free throw attempt after a common foul, except when the resuming play procedure is in effect. True_____ False_____
3. A maximum of 4 defensive players and two offensive players are allowed along the lane during a free throw attempt. True_____ False_____
4. The player in a marked lane space must have one foot near the outer edge of the free throw lane line.
True_____ False_____
5. Players who are not lined up along the lane must be positioned in the backcourt. True_____ False_____
6. Restrictions end at different times for players in marked lane spaces and for players not positioned in marked lane spaces. True_____ False_____
7. The free thrower has 15 seconds to release the ball on a free throw attempt. True_____ False_____
8. No opponent of the free thrower may distract the attempt. If distraction is determined to have occurred, a substitute free throw will be awarded. True_____ False_____
9. It is a violation for the free thrower to fake a free throw attempt. True_____ False_____
10. If the defensive player along the lane, fakes entering the lane, it is a violation, only if it causes the opponent to enter the lane too soon. True_____ False_____
11. The resuming play procedure for a free throw may only be used following a time out or intermission.
True_____ False_____
12. A player who enters the game for an injured player, who is entitled to free throws, shall be the player that will attempt the free throws. True_____ False_____
13. What are the 5 correctable errors?
 1. _____
 2. _____
 3. _____
 4. _____
 5. _____
14. If an error is corrected, play should be resumed from the point of interruption, unless it involves the awarding of merited free throws and there has been no change of possession since the error occurred.
True_____ False_____
15. Scoring mistakes may be corrected at any time, up until the final score has been approved.
True_____ False_____

Class 9 - Practice Test

NOTE: On this examination, "In the act of shooting" means the ball is still in the hands of the shooter.



| | | | |
|--|-----|-----|----|
| 1. B-1 fouls A-2 while A-1 is in the act of shooting a free throw. A-1 continues the motion and scores. The official disallows the free throw. Is the official correct? | 1. | Yes | No |
| 2. Jumper A-1 taps the ball three times prior to the jump ball ending. Official rules a violation. Is the official correct? | 2. | Yes | No |
| 3. B-1 commits an intentional personal foul on A-1. The official awards A-1 two free throws and the ball out of bounds nearest the spot of the foul. Is the official correct? | 3. | Yes | No |
| 4. Thrower-in A-1 extends the ball through the plane of the boundary line and B-1 fouls A-1. The official rules a common foul. Is the official correct? | 4. | Yes | No |
| 5. While A-1 is dribbling above the semi-circle, A-2 and B-2, in the low post, are assessed with a double personal foul. The official awards the ball back to Team A nearest to where the ball was located when the double personal foul occurred. Is the official correct? | 5. | Yes | No |
| 6. A-1, while dribbling, brushes against A-2 while A-2 is touching the boundary line. The official sounds the whistle and rules A-1 is out of bounds. Is the official correct? | 6. | Yes | No |
| 7. During a jump ball to start the game, A-1's tap is simultaneously deflected out of bounds by A-2 and B-2. The official has the original jumpers re-jump to resume play. Is the official correct? | 7. | Yes | No |
| 8. Before A-1's free throw is released, B-1 enters the lane followed by A-2. Both are in a marked lane space. The try is unsuccessful. The official awards A-1 a substitute free throw. Is the official correct? | 8. | Yes | No |
| 9. A-1 is discovered participating with an illegal jersey. The official rules a direct technical foul on the head coach. Is the official correct? | 9. | Yes | No |
| 10. A-1 is erroneously awarded a one and one. After the successful free throws, B-1 completes the throw-in to B-2, who commits a traveling violation. Prior to the ball becoming live, the error is recognized. The official rules the time frame to correct has expired. Is the official correct? | 10. | Yes | No |
| 11. Team A is assessed with a technical foul prior to the start of the game. The official instructs the scorer to set the possession arrow towards Team B's basket when he/she hands the ball to the free thrower for the first free throw. Is the official correct? | 11. | Yes | No |
| 12. While the ball is in flight on a try for goal, time expires. Before the try ends, A-2 is charged with a technical foul. The official starts the next quarter with Team B shooting the free throws. Is the official correct? | 12. | Yes | No |
| 13. After a field goal and before the ball is at the disposal of the team not credited with the score, the ball is dead. Is this correct? | 13. | Yes | No |
| 14. B-1 is discovered participating after he/she has been disqualified. The official charges the head coach with a direct technical foul. Is the official correct? | 14. | Yes | No |
| 15. Following the warning horn for a charged time-out, A-6 reports to the scorer's table to enter the game. The official beckons A-6 into the game. Is the official correct? | 15. | Yes | No |
| 16. A-1 is dribbling in the backcourt when B-1 bats the ball away. When A-1 recovers the ball, the official starts a new 10 second count. Is the official correct? | 16. | Yes | No |
| 17. A-1 recovers his/her interrupted dribble. A-1 then starts a new dribble. The official rules this is legal play. Is the official correct? | 17. | Yes | No |
| 18. A-1 is fouled and injured on the play. A-6 replaces A-1 and attempts the free throws, which are successful. A-7 reports to replace A-6. The official denies A-7 to replace A-6. Is the official correct? | 18. | Yes | No |
| 19. A-1's throw-in from the frontcourt endline is caught by A-2 in the backcourt. The official rules a backcourt violation. Is the official correct? | 19. | Yes | No |
| 20. A-1, closely guarded in the frontcourt, holds the ball for four seconds then starts to dribble. Official starts a new closely guarded count. Is the official correct? | 20. | Yes | No |



Class 9 - Practice Test (continued)

| | | | |
|---|-----|-----|----|
| 21. A-1's throw-in from the frontcourt is caught by A-2, who is airborne from the frontcourt. A-2 lands with his/her right foot touching in frontcourt first and then the left foot touching down in backcourt. Official rules this a backcourt violation. Is the official correct? | 21. | Yes | No |
| 22. Following a score, A-1 has the ball out of bounds for a throw-in when B-2 commits a common foul near the endline. Team A is not in the bonus. The official awards the ball back to Team A and rules Team A may move along the endline. Is the official correct? | 22. | Yes | No |
| 23. While A-1 is in the act of shooting and before releasing the ball, A-2 fouls B-2. A-1 continues the motion and scores. The official disallows the basket. Is the official correct? | 23. | Yes | No |
| 24. A-1 throws an elbow hitting B-1 above the shoulders but not excessively. The official rules an intentional personal foul. Is the official correct? | 24. | Yes | No |
| 25. Several minutes into the game, the scorer notifies the official that number 5 started instead of designated starter number 15. Official assesses a technical foul on Team A. Is the official correct? | 25. | Yes | No |
| 26. During an interrupted dribble the official calls a 5 second closely guard violation. Is the official correct? | 26. | Yes | No |
| 27. As A-1's try is in flight, time expires. While the ball is on its upward flight, B-1 touches the ball. The ball enters the basket. The official disallows the basket. Is the official correct? | 27. | Yes | No |
| 28. Coach of Team A selects A-1 to attempt the free throws for a technical foul. A-1 misses the first attempt. The coach replace A-1 with substitute A-6 to attempt the second free throw. The official rules the same player must attempt both free throws. Is the official correct? | 28. | Yes | No |
| 29. A-1's throw-in is touched by B-1, who has one foot touching the boundary line. The official rules this is a throw-in violation. Is the official correct? | 29. | Yes | No |
| 30. While A-1 is holding the ball for a throw-in, A-2 commits a common foul on B-2. Team B is in the bonus. The official awards B-2 a one and one. Is the official correct? | 30. | Yes | No |
| 31. A-1 jumps in the air to attempt a try. Seeing that it may be blocked, A-1 voluntarily drops the ball to the floor. A-1 is the first to touch the ball. The official rules a traveling violation on A-1. Is the official correct? | 31. | Yes | No |
| 32. A-1 catches the ball with one foot on the floor, jumps and lands on both feet simultaneously. A-1 then raises one foot and returns it to the floor before releasing the ball to try for goal. The official rules this a traveling violation. Is the official correct? | 32. | Yes | No |
| 33. Prior to A-1 attempting his/her free throw of two, A-6 reports to the scorer's table to substitute. The scorer sounds the horn and the official denies A-6 from entering the game. Is the official correct? | 33. | Yes | No |
| 34. Player A-1's undershirt has a visible manufacturer's logo. The official rules a single manufacturer's logo is permitted on the undershirt. Is the official correct? | 34. | Yes | No |
| 35. A-1's throw-in pass is caught by A-2, who has one foot touching the floor in the frontcourt. The other foot then comes down in the backcourt. The official rules this is legal play. Is the official correct? | 35. | Yes | No |
| 36. A-1 requests a 30 second time-out. After the official reports the time-out, the coach of Team A wants to change it to a 60 second time-out. The official denies the request. Is the official correct? | 36. | Yes | No |
| 37. A double personal foul is assessed while Team A is in control. The official uses the alternating possession arrow to resume play. Is the official correct? | 37. | Yes | No |
| 38. During A-1's interrupted dribble, A-2 commits a common foul. Team B is in the bonus. The official awards Team B a one and one. Is the official correct? | 38. | Yes | No |
| 39. A fight breaks out on the floor. The head coach of Team A enters the court to prevent the situation from escalating. The official rules the head coach may enter the court. Is the official correct? | 39. | Yes | No |
| 40. After the signal sounds to end the first quarter, A-1 is charged with a technical foul and the official charges the head coach with an indirect technical foul. Is the official correct? | 40. | Yes | No |



Class 9 - Practice Test (continued)

| | | | |
|--|-----|-----|----|
| 41. A-1's try lodges between the backboard and basket ring. The official rules this a violation on Team A and awards the ball to Team B nearest the spot of the violation. Is the official correct? | 41. | Yes | No |
| 42. A-1 sets a screen on stationary B-2 outside of his/her visual field. B-2 turns and, before completing a normal step backwards, contacts A-1. The official rules a blocking foul on A-1. Is the official correct? | 42. | Yes | No |
| 43. The official charges the assistant coach of Team B with a technical foul and assesses an indirect technical foul to the head coach. The official rules that both fouls count as team fouls to reach the bonus. Is the official correct? | 43. | Yes | No |
| 44. A-1, while holding the ball, touches B-1 with the ball while B-1 is standing on the boundary line. The official rules B-1 caused the ball to be out of bounds and awards Team A the ball for the throw-in. Is the official correct? | 44. | Yes | No |
| 45. After A-1 scores and before the ball is at the disposal of the thrower-in, B-2 pushes A-2. The official calls a personal foul on B-2. Is the official correct? | 45. | Yes | No |
| 46. The official inadvertently sounds his/her whistle while the ball is in the air on a try for goal by A-1. The ball enters the basket. The official rules the ball became dead when he/she sounded the whistle and disallowed the goal. Is the official correct? | 46. | Yes | No |
| 47. Airborne player A-1 passes to A-2. Prior to returning to the floor, A-1 charges B-1. The official charges A-1 with a player control foul. Is the official correct? | 47. | Yes | No |
| 48. Dribbler A-1 is advancing from backcourt to frontcourt by backing across the division line. Dribbler A-1 has both feet in the frontcourt but continues to dribble in the backcourt. The official continues the 10 second count. Is the official correct? | 48. | Yes | No |
| 49. A-1 completes his/her dribble and passes to A-2. A-2 taps the ball and A-1 catches the ball with both hands and starts another dribble. The official rules this is an illegal dribble. Is the official correct? | 49. | Yes | No |
| 50. While the ball is at the disposal of A-1 for a throw-in, A-2 commits a common foul on B-2. The official rules a team control foul. Is the official correct? | 50. | Yes | No |

Mock Test

Name: _____

NOTE: On this examination, “In the act of shooting” means the ball is still in the hands of the shooter.



| | | | | |
|-----|---|-----|-----|----|
| 1. | During A-1's interrupted dribble A-1 fouls B-1. The official rules a team control foul. Is the official correct? | 1. | Yes | No |
| 2. | After A-1 releases a free throw attempt, B-1, who is outside the three-point arc, crosses the three-point arc too soon. A-1's attempt fails to hit the ring. The official ignores A-1's violation and only penalizes B-1's violation. Is the official correct? | 2. | Yes | No |
| 3. | Team A's coach is charged with an unsporting technical foul. The official notifies the scorer that the foul counts toward reaching the bonus. Is the official correct? | 3. | Yes | No |
| 4. | Jumper A-1 taps the ball which touches the floor. A-1 is the first to touch the ball. The official rules this a legal play. Is the official correct? | 4. | Yes | No |
| 5. | Following the warning horn to resume play after a time-out, A-6 reports to the scorer to enter the game. The official beckons A-6 into the game. Is the official correct? | 5. | Yes | No |
| 6. | During a jump ball, the ball becomes live when the ball leaves the official's hand(s). Is this correct? | 6. | Yes | No |
| 7. | A-1's throw-in is touched by B-2, who is standing on the boundary line. The official rules this is a throw-in violation. Is the official correct? | 7. | Yes | No |
| 8. | A-1 commits his/her fifth foul and is disqualified. Prior to Team A replacing A-1, Team B requests a time-out. The official denies the request. Is the official correct? | 8. | Yes | No |
| 9. | While A-1's try is in flight, a double personal foul is ruled. The try is unsuccessful. The official resumes play by using the alternating possession procedure. Is the official correct? | 9. | Yes | No |
| 10. | Prior to airborne shooter A-1 returning to the floor, A-1 is fouled. The official rules A-1 was fouled in the act of shooting. Is the official correct? | 10. | Yes | No |
| 11. | Prior to the game, Team A is assessed a technical foul. The official instructs the scorer to set the possession arrow when the ball is handed to the free thrower on the first free throw. Is the official correct? | 11. | Yes | No |
| 12. | A-1, is closely guarded in the frontcourt, holds the ball for four seconds. A-1 then starts a dribble. The official starts a new 5-second count. Is the official correct? | 12. | Yes | No |
| 13. | The game clock shows 0.3 seconds remaining in the third quarter when A-2 catches the rebound of the A-1's missed free throw and tries for goal. The ball is in flight when the horn sounds. The ball enters the basket. The official disallows the goal. Is the official correct? | 13. | Yes | No |
| 14. | Jumper A-1 taps the ball which is touched simultaneously by A-2 and B-2 and goes out of bounds. The official rules the original jumpers will re-jump to continue play. Is the official correct? | 14. | Yes | No |
| 15. | B-1 jumps in front of the dribbler A-1, gets both feet down, is facing A-1 and gets to the spot first. B-1 does not give A-1 any time or distance to stop. The official charges B-1 with a blocking foul. Is the official correct? | 15. | Yes | No |
| 16. | During Team A's throw-in, A-2, airborne from the frontcourt, catches the ball. A-2 lands on one foot in the frontcourt. The other foot then comes down in the backcourt. The official rules a backcourt violation. Is the official correct? | 16. | Yes | No |
| 17. | Prior to any warning for delay, while A-1 has the ball out of bounds for the throw-in, B-1 breaks the plane of the boundary line before the ball is released. The official charges Team B with a technical foul. Is the official correct? | 17. | Yes | No |
| 18. | A-1 attempts a try. While the ball is in the imaginary cylinder above the ring, A-5 jumps and touches the ring. The official rules this basket interference. Is the official correct? | 18. | Yes | No |
| 19. | A-1 completes his/her dribble and passes the ball to A-2. A-2 taps the ball and A-1 recovers it. A-1 begins a new dribble. The official rules this a legal play. Is the official correct? | 19. | Yes | No |
| 20. | A-2 commits a foul prior to A-1 releasing the ball on a try for goal. The ball enters the basket. The official rules the goal good. Is the official correct? | 20. | Yes | No |



Mock Test.

| | | | | |
|-----|--|-----|-----|----|
| 21. | A-2 fouls B-2 while A-1 is dribbling. The official rules this is a player control foul. Is the official correct? | 21. | Yes | No |
| 22. | A-6 enters the game to replace A-5. When A-6 legally enters the court, A-5 becomes bench personnel. Is this correct? | 22. | Yes | No |
| 23. | While A-1 is in the act of shooting and before releasing the ball, B-2 fouls A-2. The try is successful. The official rules the goal good. Is the official correct? | 23. | Yes | No |
| 24. | While A-1's try is in flight, the official inadvertently sounds the whistle. The ball enters the basket. The official disallows the goal. Is the official correct? | 24. | Yes | No |
| 25. | The throw-in by A-1 is first touched inbounds by A-1. The official rules this is a throw-in violation. Is the official correct? | 25. | Yes | No |
| 26. | Thrower-in A-1 places the ball through the plane of the boundary line. B-1 fouls A-1. The official rules this a common foul. Is the official correct? | 26. | Yes | No |
| 27. | A-2 receives a pass and establishes his /her left foot as the pivot foot. A-2 then fakes a pass to the left, picks up his/her pivot foot, swings it to the right and then releases the ball to start a dribble just before that foot touches the floor. The official rules this legal play. Is the official correct? | 27. | Yes | No |
| 28. | Following a held ball, the official mistakenly awards the ball to Team A. After the throw-in ends, the mistake is recognized. The official rules the time to correct has expired. Is the official correct? | 28. | Yes | No |
| 29. | As A-1 starts to drive along the end line, B-1 places both hands on A-1's hips. The official charges B-1 with a handchecking foul. Is the official correct? | 29. | Yes | No |
| 30. | Airborne player A-1 passes the ball to A-2. Before A-1 returns to the floor, A-1 charges B-1. The official rules this a player control foul. Is the official correct? | 30. | Yes | No |
| 31. | B-1 has obtained a legal guarding position on A-1 and is maintaining that position when A-1 contact B-1 on the torso while B-1 has one foot in the air. The official charges A-1 with a player control foul. Is the official correct? | 31. | Yes | No |
| 32. | B-1 is charges with an intentional personal foul against A-1. The official awards A-1 two free throws and Team A the ball nearest the spot of the foul. Is the official correct? | 32. | Yes | No |
| 33. | B-1 dives for a loose ball and slides after gaining control on the floor. The official rules this a traveling violation. | 33. | Yes | No |
| 34. | A-1 leaves the playing court to go around a screen. The official charges A-1 with a technical foul. Is the official correct? | 34. | Yes | No |
| 35. | B-1 intentionally extends his/her leg and deflects a pass by A-. The ball hits B-1 on the inner thigh. The official rules this a legal play. Is the official correct? | 35. | Yes | No |
| 36. | During A-1's interrupted dribble, A-1 requests a time-out. The official grants the request. Is the official correct? | 36. | Yes | No |
| 37. | During an alternating possession throw-in, Team A commits a throw-in violation. The official awards the ball to Team B and instructs the scorer to turn the arrow toward Team B's basket. Is the official correct? | 37. | Yes | No |
| 38. | Team A players have a manufacturer's logo on the sleeve of the undershirt. The official rules one manufacturer's logo is permitted on the undershirts. Is the official correct? | 38. | Yes | No |
| 39. | A-1's try is touched on tis upward flight. Time expires while the ball is in flight. The ball enters the basket. The official disallows the goal. Is the official correct? | 39. | Yes | No |
| 40. | After the official bounces the ball to A-1 for a throw-in and before A-1 catches it. B-1 requests a time-out. The official denies the request. Is the official correct? | 40. | Yes | No |



Mock Test

| | | | | |
|-----|---|-----|-----|----|
| 41. | Prior to A-1 attempting his/her first free throw of two, A-6 reports to the scorer's table to substitute for A-2. The scorer sounds the horn and the official beckons A-6 into the game. Is the official correct? | 41. | Yes | No |
| 42. | During a throw-in, team control exists. Is this correct? | 42. | Yes | No |
| 43. | A-1 is bleeding and directed to the bench. Team A takes a time-out. After the time-out, A-1 enters the court. The official rules that A-1 must wait until the next opportunity to substitute to enter the game. Is the official correct? | 43. | Yes | No |
| 44. | Team A scores. While the ball is at the disposal of Team B for the throw-in, A-1 commits a common foul near the end line. Team B is not in the bonus. The official awards the ball back to Team B for a designated spot throw-in on the end line. Is the official correct? | 44. | Yes | No |
| 45. | A-1's throw-in is batted by B-1 back to A-1, who touches the ball while still out of bounds. The official rules A-1 caused the ball to be out of bounds and awards the ball to Team B for a throw-in. Is the official correct? | 45. | Yes | No |
| 46. | A-1 catches a pass while airborne, lands on one foot, jumps and lands on both feet simultaneously. A-1 then starts a dribble. The official rules this a violation. Is the official correct? | 46. | Yes | No |
| 47. | After the first quarter has ended, A-1 is charged with a technical foul. The official rules that A-1 is bench personnel and charges the coach with an indirect technical foul. Is the official correct? | 47. | Yes | No |
| 48. | While the ball is in flight on a try for goal by Team A, Team A still has team control. Is this correct? | 48. | Yes | No |
| 49. | Following a successful free throw by A-1, B-1 moves along the end line. The official rules a violation for B-1 for leaving the designated spot. Is the official correct? | 49. | Yes | No |
| 50. | While the ball is in flight on a try for goal, the signal sounds indicating that time has expired in the first quarter. Prior to the ball becoming dead, A-1 is assessed a technical foul. The official starts the second quarter by administering the penalty for the technical foul. Is the official correct? | 50. | Yes | No |



Answer Key



Lesson 1 - Court and Equipment

This examination is presented in a “Yes-No” format. Carefully read each situation described. If the answer is “YES,” draw a circle around the “Y.” If the answer is “NO,” draw a circle around the “N.”

NOTE: On this examination, “In the act of shooting” means the ball is still in the hands of the shooter.

| | | | |
|--|-----|---|--|
| 1. Music is being played while the ball is live. The official rules that this only allowed during time-outs, pre-game, post-game and intermission. Is the official correct? | 1. | <input checked="" type="checkbox"/> Yes | No |
| 2. The gym does not have a visible clock, but has a visible scoreboard. The official rules that they both must be visible, except in the case of a malfunction. Is the official correct? | 2. | <input checked="" type="checkbox"/> Yes | No |
| 3. Official rules that the new rectangular backboard must have padding along the entire bottom and at least 15 inches up the side. Is the official correct? | 3. | <input checked="" type="checkbox"/> Yes | No |
| 4. The free throw line is 15 feet from the farthest edge to the face of the backboard. Is this correct? | 4. | <input checked="" type="checkbox"/> Yes | No |
| 5. To check if the game ball is properly inflated, the referee drops it from a height of 6 feet from the bottom of the ball. The ball bounces back to a height of 52 inches at the top of the ball. The referee says that the ball is not properly inflated. Is the referee correct? | 5. | Yes | <input checked="" type="checkbox"/> No |
| 6. The ideal measurements of the playing court is 84 x 50 feet. Is this correct? | 6. | <input checked="" type="checkbox"/> Yes | No |
| 7. The sidelines and end lines shall be a minimum of 3 inches in width. Is this correct? | 7. | Yes | <input checked="" type="checkbox"/> No |
| 8. The 3-point arc has a radius of 19 feet 9 inches from the center of the basket. Is this correct? | 8. | <input checked="" type="checkbox"/> Yes | No |
| 9. The referee looks at the ball before a girls' basketball game and the ball is stamped 28.5 inches. Is this the correct size ball to use? | 9. | <input checked="" type="checkbox"/> Yes | No |
| 10. A-1 has the ball for a throw-in, as A-1 is making the throw-in pass, A-1 steps on the boundary line but not over it. Is A-1 still out of bounds? | 10. | <input checked="" type="checkbox"/> Yes | No |
| 11. The basket ring shall have its upper edge be ten feet above the floor. Is this correct? | 11. | <input checked="" type="checkbox"/> Yes | No |
| 12. The basket ring shall be 18 inches in diameter. Is this correct? | 12. | <input checked="" type="checkbox"/> Yes | No |
| 13. The net shall be suspended from the ring and be 15 to 18 inches in length. Is this correct? | 13. | <input checked="" type="checkbox"/> Yes | No |
| 14. In facilities that do not have a red light or LED light behind the backboard shall use the audible timer's signal to indicate time has expired at the end of each quarter. Is this correct? | 14. | <input checked="" type="checkbox"/> Yes | No |
| 15. Dribbler A-1 brushes against B-2, who is touching the boundary line. Official sounds the whistle and rules A-1 is out of bounds. Is the official correct? | 15. | Yes | <input checked="" type="checkbox"/> No |
| 16. Dribbler A-1 is near the sideline when B-2 standing on the boundary line reaches out and touches the ball. The Official sounds the whistle and rules an out of bounds violation on Team B. Is the official correct? | 16. | <input checked="" type="checkbox"/> Yes | No |
| 17. Dribbler A-1 dribbling up the sideline touches the inside edge of the boundary line. The official rules A-1 is out of bounds. Is the official correct? | 17. | <input checked="" type="checkbox"/> Yes | No |
| 18. The division line is considered to be in the backcourt. Is that correct? | 18. | <input checked="" type="checkbox"/> Yes | No |
| 19. Spirit participants must remain outside the playing area during a 30 second time out. Is this correct? | 19. | <input checked="" type="checkbox"/> Yes | No |
| 20. The spaces around the restraining circle are 24 inches deep. Is this correct? | 20. | Yes | <input checked="" type="checkbox"/> No |
| 21. A-1's field goal attempt hits the ring and bounces off the top of the backboard and goes in. The official disallows the goal. Is the official correct? | 21. | Yes | <input checked="" type="checkbox"/> No |
| 22. A-1's field goal attempt hits the ring and bounces off the top of the backboard support and goes in. The official disallows the goal. Is the official correct? | 22. | <input checked="" type="checkbox"/> Yes | No |
| 23. A-1 is near the end line and attempts a field goal that passes over the corner of the rectangular backboard. The official rules this an out of bounds violation. Is the official correct? | 23. | <input checked="" type="checkbox"/> Yes | No |
| 24. A-1's field goal attempt hits the side of the backboard. The official allows play to continue. Is the official correct? | 24. | <input checked="" type="checkbox"/> Yes | No |
| 25. A-1 throws a long pass to A-2 that hits a rope hanging from the ceiling near the division line. The official rules this out of bounds violation. Is the official correct? | 25. | <input checked="" type="checkbox"/> Yes | No |



Court and Equipment REVIEW SHEET of Lesson 1

1. What are the ideal measurements for the high school court? **84 x 50 feet**
2. The sidelines and end lines shall be a minimum of **2** inches in width.
3. The division line is how many inches wide? **2 inches**
4. Which is the largest? frontcourt _____ backcourt **x**
5. The 3-point line has a radius of **19 feet and 9 inches**.
6. Are logos, markings or lettering allowed on the backboard or basket? Yes or **No**
7. What is the inside diameter of the basket ring? **18 inches**
8. How high is the basket ring from the floor? **10 feet**
9. If the ball is properly inflated, when dropped from 6 feet, it will bounce between **49 and 54 inches**.
10. The net shall extend below the basket ring **15 to 18 inches**.
11. A player is out of bounds when he/she touches the floor or any object other than player/person outside the boundary line. True **x** False _____
12. The ball is out of bounds when: (circle all that apply)
 - a.** It touches a player who is out of bounds.
 - b.** It touches any other person, the floor or object outside a boundary line.
 - c.** It touches the supports or back of the backboard.
 - d.** It touches the ceiling, overhead equipment or supports.
 - e. It touches the side or the top of the backboard.
 - f.** When it passes over a rectangular backboard.
 - g. When it passes over a fan shaped backboard.
13. The spots around the center circle for the jump ball are **36 inches deep**.
14. The clock and visible scoreboard are mandatory except in case of malfunction.
True **x** False _____
15. The ball for boys' contests should have a circumference of **29.5 to 30 inches**.
16. The ball for girls' contests should have a circumference of **28.5 to 29 inches**.
17. Non-playing personnel may stand on the endline, outside the free throw lane lines.
True **x** False _____
18. Cheerleaders, dance teams, media etc. shall remain outside the playing area during a 30 second time out. True **x** False _____



Lesson 2 - Official's Duties and Uniforms

NOTE: On this examination, "In the act of shooting" means the ball is still in the hands of the shooter.

| | | | |
|--|-----|---|--|
| 1. The referee is checking the scorebook before the game, he/she notices the scorer and timer are not seated next to one another. The referee rules they must be seated next to one another. Is the referee correct? | 1. | Yes | <input checked="" type="checkbox"/> No |
| 2. The scorer notifies the official of a discrepancy in the score. The referee cannot find the error. The referee rules that the progressive score in the official scorebook will prevail. Is the referee correct? | 2. | <input checked="" type="checkbox"/> Yes | No |
| 3. Team A submits its squad list and starting line-up at least 10 minutes before the game. After the 10-minute mark, coach of Team A adds two names to the squad list and Team A is assessed one technical foul. As the game is in progress, the scorer notifies the official that two players of Team A are wearing different numbers than recorded in the official scorebook. Official assesses no penalty. Is the official correct? | 3. | <input checked="" type="checkbox"/> Yes | No |
| 4. Ten minutes prior to the start of the game, the official, checking the scorebook, discovers two squad members are wearing identical numbers. Official assesses a technical foul to the second listed squad member. Is the official correct? | 4. | Yes | <input checked="" type="checkbox"/> No |
| 5. For no apparent reason, A-5 changes his/her shirt and number at halftime and reports the change to the scorer and official. Official rules that no penalty will be assessed. Is the official correct? | 5. | Yes | <input checked="" type="checkbox"/> No |
| 6. The timer sounds the horn with 20 seconds before the expiration of a 60-second time out. Is that correct? | 6. | Yes | <input checked="" type="checkbox"/> No |
| 7. The timer sounds the warning horn to begin the 15 second interval of time for the coach to replace an injured player. | 7. | <input checked="" type="checkbox"/> Yes | No |
| 8. With 3:00 remaining in the 3 rd quarter, the official notices A-3 is wearing an illegal jersey. The official charges the head coach with a direct technical foul. Is the official correct? | 8. | <input checked="" type="checkbox"/> Yes | No |
| 9. A-1 is called for traveling. Official sounds the whistle and glances at the clock. Three seconds is showing but the timer stops the clock with 2 seconds remaining. Official rules no timing mistake has occurred and makes no correction. Is the official correct? | 9. | Yes | <input checked="" type="checkbox"/> No |
| 10. The official administers a throw-in to Team A in the backcourt with 2:20 remaining in the second quarter. The official has a backcourt count at 8 when the ball is tipped out of bounds. The official notices the clock remains at 2:20. The official has the clock reset to 2:12. Is the official correct? | 10. | <input checked="" type="checkbox"/> Yes | No |
| 11. A-1 scored a field goal attempt very near the expiration of time in the second quarter. The officials confer and cannot decide whether or not the goal should count. The referee confers with the table officials and they disagree whether or not the goal shall count. The officials count the goal. Are the officials correct? | 11. | <input checked="" type="checkbox"/> Yes | No |
| 12. The official's jurisdiction is terminated and the final score approved when all officials leave the visual confines of the playing area. Is this correct? | 12. | <input checked="" type="checkbox"/> Yes | No |
| 13. A-1 is dribbling near the sideline and loses his/her balance in front of their coach, the coach instinctively uses his/her hands to prevent player from falling out of bounds. A-1 maintains inbounds status and then passes the ball to a teammate. The official rules this a legal play. Is the official correct? | 13. | Yes | <input checked="" type="checkbox"/> No |
| 14. The referee shall designate the official scorer, timer, scorebook and timepiece as well as inspect and approve all equipment before each contest. Is this correct? | 14. | <input checked="" type="checkbox"/> Yes | No |
| 15. Team A school colors are white and blue. They enter the court wearing home white jerseys. A-1 enters the court wearing a red wristband and red headband. Official rules A-1's wristband and headband are illegal. Is the official correct? | 15. | <input checked="" type="checkbox"/> Yes | No |
| 16. A-1 is wearing a white arm sleeve, A-2 is wearing a black arm sleeve. The official rules that arm sleeves must be a matching color. Is the official correct? | 16. | <input checked="" type="checkbox"/> Yes | No |
| 17. During the pre-game warm-ups, the official notices that a team member of Team A is wearing an earring. Official informs the coach that the team member must remove the jewelry before he/she can continue warming up. Is the official correct? | 17. | <input checked="" type="checkbox"/> Yes | No |
| 18. Team A enters the court wearing white uniforms with visible red undershirts. The official informs the coach of Team A that the team members will not be able to participate until the undershirts are removed. Is the official correct? | 18. | <input checked="" type="checkbox"/> Yes | No |
| 19. A-1 is wearing his/her home white uniform. In addition to the uniform he/she is wearing a white headband, white wristband, white compression shorts and a white undershirt that all feature a visible manufacturer's logo. The official rules that all apparel is legal. Is the official correct? | 19. | <input checked="" type="checkbox"/> Yes | No |
| 20. A-1 enters the court wearing a cast on his/her forearm covered by soft padding. The official rules that A-1 may not participate in the game wearing the cast. Is the official correct? | 20. | <input checked="" type="checkbox"/> Yes | No |

Officials' Duties and Uniforms
REVIEW SHEET of Lesson 2



1. It is recommended x or mandatory _____ that the scorer and timer be seated next to one another.
2. Prior to the game, when does the officials' jurisdiction begin? **when the officials arrive on the floor**
3. The officials should arrive on the court at least 15 minutes before the scheduled starting time of the game.
4. When does the jurisdiction of the official end? **when all officials leave the visual confines of the playing court**
5. Each team must be notified 3 minutes before the second half begins.
6. How does the referee approve the final score when the game is over? **leave the visual confines of the playing court**
7. If the scorer makes a mistake in the scorebook, when can that mistake be corrected? **at any time**
8. A team must submit its squad list and designate their starters 10 minutes before the start of the game.
9. Which of the following is an administrative technical? (circle all that apply)
 - a. Team A fails to submit its roster and starters, 10 minutes before the start of the game.
 - b. After the 10 minute mark in pre-game warm ups, Team A adds name to the roster.
 - c. After the 10 minute mark in pre-game warm ups, Team A changes a number of a team member.
 - d. Team A has identical numbers listed on the team roster in the scorebook.
10. The timer shall sound a warning horn 15 seconds before the expiration of all time-outs, intermissions, and intervals of time to replace players removed from the game.
11. The coach has 15 seconds to replace a disqualified, injured or a player directed to leave the game.
12. When may official correct timing mistakes? **when an official had definite knowledge**
13. Which of the following items **must** be deemed illegal? (circle all that apply)
 - a. A cast on the forearm covered with soft padding.
 - b. A hard brace on the elbow covered with soft padding.
 - c. A nose guard molded to the face without any sharp edges to protect a broken nose.
 - d. A hard object on the upper arm covered with soft padding.
 - e. A knee brace that is unaltered from the manufacturer's original design.
14. Assuming A-1 is wearing a home white jersey, which of the following are **illegal**? (circle all that apply)
 - a. A-1 has a visible manufacturer's logo on shirt.
 - b. A-1 has a visible manufacturer's logo on undershirt.
 - c. A-1 has a visible manufacturer's logo on the game pants.
 - d. A-1 is wearing a blue leg sleeve.
 - e. A-1 is wearing a visible blue undershirt under the white jersey.
 - f. A-1 is wearing a blue headband and white arm sleeve.

Lesson 3 - Referee Duties, Substitutions, Head Coaches' Rule and Scoring



NOTE: On this examination, "In the act of shooting" means the ball is still in the hands of the shooter.

| | | | |
|--|-----|---|--|
| 1. The referee has the authority to designate an umpire to make the opening toss to start the game. Is this correct? | 1. | <input checked="" type="checkbox"/> Yes | <input type="checkbox"/> No |
| 2. The referee shall administer the throw-in to start the second, third and fourth quarters. Is this correct? | 2 | <input checked="" type="checkbox"/> Yes | <input type="checkbox"/> No |
| 3. A-1 is called for a personal foul by the umpire. The referee does not believe a foul was committed and overturns the ruling made by the umpire. Is the referee correct? | 3. | <input type="checkbox"/> Yes | <input checked="" type="checkbox"/> No |
| 4. A-2 is fouled and is exhibiting signs and symptoms of a concussion. The official has A-2 removed from the game. The head coach has 15 seconds to replace this player. Is this correct? | 4. | <input checked="" type="checkbox"/> Yes | <input type="checkbox"/> No |
| 5. The score is tied 60-60 at the end of regulation time. The official has the scorer place 5 minutes on the clock for the overtime period. Is the official correct? | 5. | <input type="checkbox"/> Yes | <input checked="" type="checkbox"/> No |
| 6. The assistant coach of Team A is assessed a technical foul and an indirect technical foul is charged to the head coach. Official informs the scorer that both fouls count toward reaching the bonus. Is the official correct? | 6. | <input type="checkbox"/> Yes | <input checked="" type="checkbox"/> No |
| 7. A-1 has committed three personal fouls and been assessed a technical foul through the first 3 quarters. Early in the 4 th quarter. A-1 commits a foul on B-1. The official disqualifies A-1 from the game. Is the official correct? | 7. | <input checked="" type="checkbox"/> Yes | <input type="checkbox"/> No |
| 8. A-1 was assessed a technical foul in the first quarter. In the 3 rd quarter, A-1 is assessed a second technical foul. The official disqualifies A-1 from further participation. Is this correct? | 8. | <input checked="" type="checkbox"/> Yes | <input type="checkbox"/> No |
| 9. An "X" shall be placed in front of the official scorer on the floor out of bounds to help substitutes properly report to table to enter the game. Is this correct? | 9. | <input checked="" type="checkbox"/> Yes | <input type="checkbox"/> No |
| 10. Team A substitutes 4 new players. Captain of Team B requests a defensive match-up. The official allows the match up. Is the official correct? | 10. | <input checked="" type="checkbox"/> Yes | <input type="checkbox"/> No |
| 11. Team A is granted a time-out. After the warning horn has sounded, A-6 reports to the scorer's table to enter the game. Official denies A-6 from entering the game. Is the official correct? | 11. | <input checked="" type="checkbox"/> Yes | <input type="checkbox"/> No |
| 12. A-6 substitutes for A-1. As A-6 enters the court, the coach of Team B is assessed a technical foul. Coach of Team A immediately sends A-1 back to the scorer's table to replace A-6 to attempt the free throws. The official beckons A-1 in the game ruling anyone can attempt the free throws for a technical foul including an entering substitute. Is the official correct? | 12. | <input type="checkbox"/> Yes | <input checked="" type="checkbox"/> No |
| 13. Prior to B-1 attempting the first of two free throws, A-6 reports to the scorer's table to replace A-1. Official beckons A-6 into the game. Is the official correct? | 13. | <input type="checkbox"/> Yes | <input checked="" type="checkbox"/> No |
| 14. B-5 fouls A-1, who is awarded two free throws. It's B-5's fifth foul. B-6 reports and replaces B-5. After B-6 enters the court, A-6 reports to replace A-5. Scorer sounds the horn. Official denies A-6 from entering the game. Is the official correct? | 14. | <input checked="" type="checkbox"/> Yes | <input type="checkbox"/> No |
| 15. A-6 legally enters the court to replace A-5. As A-5 is leaving the court, A-5 is assessed a technical foul. Official rules A-5 is bench personnel and charges an indirect technical foul to the head coach. Is the official correct? | 15. | <input checked="" type="checkbox"/> Yes | <input type="checkbox"/> No |
| 16. Substitute A-6 is at the table waiting to enter the game. A-6 enters the court without being beckoned by an official. The official assesses A-6 a technical foul and an indirect to the head coach. Is the official correct? | 16. | <input type="checkbox"/> Yes | <input checked="" type="checkbox"/> No |
| 17. A-1's try is in flight as time expires in the third quarter. The ball enters basket. Official counts the goal. Is the official correct? | 17. | <input checked="" type="checkbox"/> Yes | <input type="checkbox"/> No |
| 18. A-2 dunks, the ball hits the bottom of the net and pops back out of the basket. Official allows play to continue. Is the official correct? | 18. | <input checked="" type="checkbox"/> Yes | <input type="checkbox"/> No |
| 19. While the ball is in flight on a try for goal, time expires in the first quarter. Before the try ends, B-1 is charged with a technical foul. Official starts the second quarter by administering the penalty for the technical foul. Is the official correct? | 19. | <input type="checkbox"/> Yes | <input checked="" type="checkbox"/> No |
| 20. A-1 is fouled as time expires in the second quarter and awarded a one-and-one. As the official is reporting the foul a technical foul is assessed against team B's coach. Official awards A-1 his/her one-and-one and starts the third quarter by administering the technical foul. Is the official correct? | 20. | <input type="checkbox"/> Yes | <input checked="" type="checkbox"/> No |
| 21. While in the act of shooting and prior to releasing the ball, A-1 is fouled as the signal sounds indicating time has expired in the quarter. A-1 continues the motion and scores. Official counts the goal and awards one free throw. Is the official correct? | 21. | <input type="checkbox"/> Yes | <input checked="" type="checkbox"/> No |
| 22. With 3 tenths of a second on the game clock, A-1's throw-in is tapped toward Team A's basket by A-2. While the ball is in flight time expires. The try is successful. Official counts the goal. Is the official correct? | 22. | <input checked="" type="checkbox"/> Yes | <input type="checkbox"/> No |
| 23. A-1 is fouled as time expires in the fourth quarter with team B leading 65-63. A-1 is awarded two free throws. A-1's first try is unsuccessful. Official rules A-1 will not receive the second free throw because the outcome of the game has already been decided. Is the official correct? | 23. | <input checked="" type="checkbox"/> Yes | <input type="checkbox"/> No |

**Referee Duties, Substitutions, Head Coaches' Rule and Scoring
REVIEW SHEET of Lesson 3**



1. The opening toss must be conducted by the referee. True _____ False x
2. Does the referee have the authority to decide whether a goal shall count, if the officials disagree?
Yes x No _____
3. Which of the following scenarios would a player be disqualified during a game?
(circle all that apply)
 - a. A-1 commits 4 personal fouls and 1 technical foul.
 - b. A-1 commits a flagrant personal foul.
 - c. A-1 commits 2 technical fouls.
 - d. A-1 commits an intentional personal foul and a technical foul.
4. When a player is disqualified, the official should notify the coach of the disqualification, and then have the timer start the 15 second interval of time before notifying the player that he/she is disqualified. True x False _____
5. A player exhibits signs or symptoms of a concussion; they should be removed from the game immediately. True x False _____
6. When bench personnel gets charged with a technical foul, an indirect foul gets charged to the head coach. True x False _____
7. In which of the following scenarios would a head coach be ejected from a game?
(circle all that apply)
 - a. Head coach has 2 direct technical fouls.
 - b. Head coach commits a flagrant foul.
 - c. Head coach 2 indirect technical fouls.
 - d. Head coach has 1 direct technical and 2 indirect technicals.
8. Can a substitute enter the game before the first free throw of two after a shooting foul?
Yes _____ No x
9. When does a player who has been substituted for become bench personnel?
When the substitute for that player is beckoned into the game.
10. A-1 is injured and directed to leave the game, may Team A take a time out to keep A-1 in the game? Yes x No _____
11. If play resumes with a throw-in with 3 tenths or less on the game clock, can a goal be scored on a try for goal? Yes _____ No x
12. In a high school varsity game, what is the length of time for
 - a. Pre-Game Warmups is **15 minutes.**
 - b. Each quarter is **8 minutes.**
 - c. Between quarters is **1 minute.**
 - d. Between halves is **10 minutes.**
 - e. Overtime period is **4 minutes.**

Lesson 4 – Live Ball, Control, Jump Ball and Time Outs



NOTE: On this examination, “In the act of shooting” means the ball is still in the hands of the shooter.

| | |
|--|---|
| 1. On a jump ball, the ball becomes live as soon as the tossed ball leaves the referees hands. Is this correct? | 1. <input checked="" type="checkbox"/> Yes <input type="checkbox"/> No |
| 2. As the official is bouncing the ball to thrower-in A-1, B-1 requests a time-out. Official denies the request, stating when he/she released the ball, the ball became live. Is the official correct? | 2. Yes <input checked="" type="checkbox"/> No |
| 3. As the official bounces the ball to free thrower A-1 and before A-1 catches the ball, the ball is dead. Is this correct? | 3. <input checked="" type="checkbox"/> Yes <input type="checkbox"/> No |
| 4. The ball becomes dead after a made goal or free throw. Is this correct? | 4. <input checked="" type="checkbox"/> Yes <input type="checkbox"/> No |
| 5. To start the game, each team should be trying for goal at the basket closest to their bench. Is that correct? | 5. Yes <input checked="" type="checkbox"/> No |
| 6. After the whistle is blown but prior to the ball leaving the official's hands on a jump ball, B-2 moves onto the circle. Official rules this is a legal play. Is the official correct? | 6. Yes <input checked="" type="checkbox"/> No |
| 7. Jumper A-1 catches the ball after the ball has been tapped, but before the jump ball has ended. Official rules this is a violation, awards Team B the ball and sets the arrow toward Team A's basket. Is the official correct? | 7. <input checked="" type="checkbox"/> Yes <input type="checkbox"/> No |
| 8. The 8 non-jumpers take positions on the restraining circle. As the official is ready to toss the ball, B-3 backs straight off the circle. A-4, who was next to B-3, moves into the vacated spot. Official rules a violation on A-4. Is the official correct? | 8. <input checked="" type="checkbox"/> Yes <input type="checkbox"/> No |
| 9. After the referee tosses the ball for a jump ball and before the ball is tapped, A-2 moves into an unoccupied space on the circle. Official rules this is a violation. Is the official correct? | 9. Yes <input checked="" type="checkbox"/> No |
| 10. The jump ball ends as soon as it is tapped by one of the jumpers. Is this correct? | 10. Yes <input checked="" type="checkbox"/> No |
| 11. The clock starts on a jump ball as soon as it is legally touched by one of the jumpers. Is this correct? | 11. <input checked="" type="checkbox"/> Yes <input type="checkbox"/> No |
| 12. A-1 jumps to attempt a shot. B-1 is able to put his/her hands on the ball and prevents A-1 from releasing the ball. The official rules this is a held ball. Is this correct? | 12. <input checked="" type="checkbox"/> Yes <input type="checkbox"/> No |
| 13. A-1 and B-1 simultaneously have their hands placed on the ball. A-1 is able to secure control of the ball away from B-1 without undue roughness. The official rules this is a held ball. Is the official correct? | 13. Yes <input checked="" type="checkbox"/> No |
| 14. The official scorer informs the referee that the AP arrow is kept on the scoreboard at the end of the gym. The referee informs home management that an AP arrow is required to be located at the scorers' table. Is the referee correct? | 14. <input checked="" type="checkbox"/> Yes <input type="checkbox"/> No |
| 15. The coach for Team A requests that an error in the direction of the AP arrow be rectified. The error cannot be found. The coach of Team A is assessed a technical foul. Is this correct? | 15. Yes <input checked="" type="checkbox"/> No |
| 16. During the jump ball to start the game. A-3 secures the ball and begins to dribble up the court. The scorer turns the arrow toward Team B's basket as soon as A-3 secured control. Is this correct? | 16. <input checked="" type="checkbox"/> Yes <input type="checkbox"/> No |
| 17. On a jump ball, to start the overtime, B-3 fouls A-3 before the ball was secured by either team. It is Team B's 7 th foul. The official has the scorer set the arrow towards Team B's basket as soon as it is at the disposal of A-3 for the first free throw. Is the official correct? | 17. <input checked="" type="checkbox"/> Yes <input type="checkbox"/> No |
| 18. Before the game, the coach of Team B is assessed a technical foul. The official has the arrow set towards Team B's basket as soon as the ball is at the disposal of A-1 for the first free throw for the technical foul. Is the official correct? | 18. Yes <input checked="" type="checkbox"/> No |
| 19. Jumper B-1 catches the opening toss before the jump ball has ended. The official rules this is a violation and immediately has the scorer set the arrow toward Team A's basket. Is the official correct? | 19. Yes <input checked="" type="checkbox"/> No |
| 20. On the opening tap to start the game A-2 and B-2 simultaneously bat the ball out of bounds. The official has A-2 and B-2 re-jump to start the game. Is the official correct? | 20. <input checked="" type="checkbox"/> Yes <input type="checkbox"/> No |
| 21. Team A requests a 30-second time-out. Scorer informs the official that Team A has no 30-second time-outs remaining. Official charges Team A with a 60-second time-out, if they have any remaining. Is the official correct? | 21. <input checked="" type="checkbox"/> Yes <input type="checkbox"/> No |
| 22. During a 30 second time-out the coach of Team A allows his/her players to sit on the bench. Official informs the coach that players must remain standing within the confines of the bench area. Is the official correct? | 22. <input checked="" type="checkbox"/> Yes <input type="checkbox"/> No |
| 23. Team A is granted a 30 second time-out. Official instructs the timer to sound a warning horn 15 seconds prior to the 30 seconds expiring. Is the official correct? | 23. <input checked="" type="checkbox"/> Yes <input type="checkbox"/> No |
| 24. Airborne player A-1 intercepts a pass near the side line. A-1 seeing he/she will land out of bounds, verbally requests a time-out. Official grants the request. Is the official correct? | 24. <input checked="" type="checkbox"/> Yes <input type="checkbox"/> No |

**Live Ball, Control, Jump Ball and Time Outs
REVIEW SHEET of Lesson 4**



1. What 3 ways can the ball become live?
 - a. **Jump ball**
 - b. **Free throw**
 - c. **Throw-In**

2. When does a ball become live on a:
 - a. Free Throw **At disposal**
 - b. Jump Ball **As soon as the ball leaves the tossing official's hands**
 - c. Throw-In **At disposal**

3. When the referee is ready to toss the ball for the jump ball to start the game, non-jumpers shall not?
 - a. **Move onto the center circle**
 - b. **Change positions around the center circle**

4. Until the tossed ball is touched by one or both of the jumpers, non-jumpers shall not:
 - a. **Break the plan of the center circle with a foot**
 - b. **Take a position in an occupied space**

5. Which of the following would be a violation on the jumper: (circle all that apply)
 - a. Touching the tossed ball before it reaches its highest point.
 - b. Leaving the center restraining circle before the ball has been touched.
 - c. Catching the jump ball.
 - d. Touching the ball more than twice before the jump ball ends.

6. The jump ball ends when it touches: (circle all that apply)
 - a. One of the eight non-jumpers
 - b. An official
 - c. The floor
 - d. The basket
 - e. The backboard

7. Should the AP arrow be pointed at the team benches _____ or baskets x ?

8. On the opening toss, A-1 taps the ball directly out of bounds.
 - a. Which team will get the arrow? **Team A**
 - b. When will it be set? **At disposal of throw-in**

9. Just after the ball leaves the referee's hands, on a jump ball, to start an overtime period, B-1 fouls A-1, Team A is in the bonus.
 - a. Which team will get the arrow? **Team B**
 - b. When will it be set? **At disposal of the first three throw**

10. A team is entitled to 3 60 second time-outs and 2 30 second time-outs during a regulation game.

11. Assuming Team A has possession of the ball or the ball is at their disposal, who may call time out: (circle all that apply)
 - a. Player on the court
 - b. Head Coach
 - c. Assistant Coach
 - d. Team member on the bench

Lesson 5 – Throw-ins, Warnings, and Alternating Possession



NOTE: On this examination, “In the act of shooting” means the ball is still in the hands of the shooter.

| | | | | |
|-----|---|-----|---|--|
| 1. | B-2 scores. Team A is not readily making a thrower available to make a throw-in. The official begins the five second count. Is the official correct? | 1. | <input checked="" type="checkbox"/> Yes | <input type="checkbox"/> No |
| 2. | During a designated spot throw-in, A-1 moves directly backward 2 feet to avoid the defensive pressure. The official rules this is a violation for leaving the designated spot. Is the official correct? | 2. | <input type="checkbox"/> Yes | <input checked="" type="checkbox"/> No |
| 3. | The ball is awarded to A-1 for a throw-in. A-1 makes a long pass down the court. Before the ball is legally touched on the court, the official reaches the count of five and rules a throw-in violation on Team A. Is the official correct? | 3. | <input type="checkbox"/> Yes | <input checked="" type="checkbox"/> No |
| 4. | The official mistakenly awards Team A the ball for the throw-in. As A-2 is dribbling up court the official recognizes the mistake and blows the whistle. The official takes the ball back to the original throw-in spot, awards the ball to Team B and puts the consumed time back on the game clock. Is the official correct? | 4. | <input type="checkbox"/> Yes | <input checked="" type="checkbox"/> No |
| 5. | A-3 and B-3 simultaneously knock the ball out of bounds. The official uses the alternating possession arrow to resume play. Is the official correct? | 5. | <input checked="" type="checkbox"/> Yes | <input type="checkbox"/> No |
| 6. | Following a violation, thrower-in A-1, jumps into the air and forward toward the boundary line. A-1's body has crossed the plane of the boundary line but still has one foot over the designated spot prior to releasing the ball. Official rules this is a legal throw-in. Is the official correct? | 6. | <input checked="" type="checkbox"/> Yes | <input type="checkbox"/> No |
| 7. | Following a score, A-1 has the ball out of bounds for the throw-in, when B-1 breaks the plane of the boundary line. The official issues a warning to Team B. Official rules Team A, no longer has the privilege of moving along the end line. Is the official correct? | 7. | <input type="checkbox"/> Yes | <input checked="" type="checkbox"/> No |
| 8. | During an alternating possession throw-in by Team A, A-2 fouls B-2 before the throw-in is legally touched and before the bonus is in effect. The official awards Team B the ball at the nearest spot of the foul and instructs the scorer that the arrow stays with Team A. Is the official correct? | 8. | <input checked="" type="checkbox"/> Yes | <input type="checkbox"/> No |
| 9. | During an alternating possession throw-in, the official mistakenly awards the ball to Team A instead of Team B. Team A completes the throw in before the official recognizes the mistake. The official cannot correct the error of awarding the ball to the wrong team, but the arrow will remain with Team B. Is the official correct? | 9. | <input checked="" type="checkbox"/> Yes | <input type="checkbox"/> No |
| 10. | During an alternating possession procedure throw-in, Team A commits a throw-in violation. The official awards Team B the ball and instructs the scorer to turn the arrow toward Team B's basket. Is the official correct? | 10. | <input checked="" type="checkbox"/> Yes | <input type="checkbox"/> No |
| 11. | During an alternating possession throw-in, thrower-in A-1 breaks the plane of the boundary line with the ball. B-1 grasps the ball and neither player can get the ball from the other. The official rules a held ball and gives the ball back to Team A for an alternating possession throw-in. Is the official correct? | 11. | <input checked="" type="checkbox"/> Yes | <input type="checkbox"/> No |
| 12. | Team B scores. A-1's throw-in is batted back out of bounds, over the end line. The official awards the ball back to Team A and rules Team A still has the privilege of moving along the end line. Is the official correct? | 12. | <input type="checkbox"/> Yes | <input checked="" type="checkbox"/> No |
| 13. | Following a field goal by Team B, and before the throw-in is completed, B-2 commits a common foul near the end line. Team A is not in the bonus. The official awards the ball back to Team A and rules Team A still has the privilege of moving along the end line. Is the official correct? | 13. | <input checked="" type="checkbox"/> Yes | <input type="checkbox"/> No |
| 14. | Following a field goal by Team B and before the throw-in is completed, B-2 commits an intentional personal foul near the end line. Team A is not in the bonus. The official awards the ball back to Team A and rules Team A still has the privilege of moving along the end line. Is the official correct? | 14. | <input type="checkbox"/> Yes | <input checked="" type="checkbox"/> No |
| 15. | Following a violation by Team B, Team A delays, by not making a thrower readily available. The official charges Team A with a technical foul. Is the official correct? | 15. | <input type="checkbox"/> Yes | <input checked="" type="checkbox"/> No |
| 16. | After a timeout, Team A is still huddling in the bench area and does not make a thrower readily available to complete the throw-in. The official charges Team A with a technical foul. Is the official correct? | 16. | <input type="checkbox"/> Yes | <input checked="" type="checkbox"/> No |
| 17. | While A-1's second free throw of two is in flight, the official assesses a double personal foul. The ball enters the basket. The official counts the free throw and resumes play by awarding Team B a throw-in. Is the official correct? | 17. | <input checked="" type="checkbox"/> Yes | <input type="checkbox"/> No |
| 18. | Following a goal by A-1, the coach for Team B confronts the trail official and argues that A-1 traveled. May the official issue a warning to the head coach? | 18. | <input checked="" type="checkbox"/> Yes | <input type="checkbox"/> No |
| 19. | The official issues a warning to the head coach for standing outside the coaching box. The warning must be recorded in the scorebook and reported to the head coach. Is this correct? | 19. | <input checked="" type="checkbox"/> Yes | <input type="checkbox"/> No |
| 20. | The head coach uses profane language at the official. The official issues a warning to the head coach and has it recorded in the score book. Is the official correct? | 20. | <input type="checkbox"/> Yes | <input checked="" type="checkbox"/> No |



Throw-ins, Warnings and Alternating Possession REVIEW SHEET of Lesson 5

- In which of the follow situations has disposal occurred? (circle all that apply)
 - The official has handed the ball to thrower A-1.
 - Thrower A-1 has caught the ball after it was bounced to him/her by an official.
 - After appropriate signals have been given, the official has placed the ball on the floor at the throw-in spot.
 - The ball is readily available after a made basket and the throw-in team has not made an attempt to recover the ball.
- The throw-in and throw-in count begin when the ball is at the disposal of the team entitled to the throw in. True _____ False _____
- Which of the following are considered to be **throw-in violations** on Team A?
 - After a violation, Thrower A-1 does not throw the ball directly on the court so it can be legally touched by another player.
 - Thrower A-1 does not release the ball within 5 seconds.
 - After a violation, Thrower A-1 moves laterally 6 feet before releasing the ball onto the court.
 - After a made basket, A-1 and A-2 step out of bounds off the endline, A-1 picks up the ball and passes the ball to A-2, while both players are still out of bounds.
 - After a made basket, Thrower A-1 releases the ball and B-2 catches the pass while standing on the endline.
 - Thrower A-1 carries the ball onto the court.
 - Thrower A-1 releases the ball, but is the first player to touch the ball on the court.
 - Thrower A-1 throws the ball directly into the basket.
 - After a violation, A-1 has the ball out of bounds for a throw-in and A-2 steps out of bound to replace A-1 for a throw in.
- Where will the spot of the throw-in be:
 - Technical foul **at the division line, opposite the table**
 - Common foul **at the spot of the foul**
 - Intentional foul **at the spot of the foul**
- If there is a foul by defense, during an AP throw-in, is the arrow reversed? Yes _____ No **x** _____
- If there is a foul by offense, during an AP throw-in, is the arrow reversed? Yes _____ No **x** _____
- If there is a violation by defense, during an AP throw-in, is the arrow reversed?
Yes _____ No **x** _____
- If there is a violation by the offense, during an AP throw-in, is the arrow reversed?
Yes **x** _____ No _____
- What are the 4 warnings for Delay?
 - For a throw-in plane violation.**
 - For huddling by either team and contact with the free thrower.**
 - For interfering with the ball following a goal.**
 - For failure to have the court ready for play following a time-out.**

Lesson 6 – Shooting, Dribbling and Violations



NOTE: On this examination, “In the act of shooting” means the ball is still in the hands of the shooter.

| | | | |
|--|-----|---|--|
| 1. Airborne A-1 has released the ball on a try for goal when fouled by B-1. The official rules A-1 was in the act of shooting. Is the official correct? | 1. | <input checked="" type="checkbox"/> Yes | No |
| 2. A-1 is fouled while tapping a rebound toward his/her basket. Ball enters basket. The official counts the goal and awards A-1 one free throw. Is the official correct? | 2 | <input checked="" type="checkbox"/> Yes | No |
| 3. On a try by A-1, the ball is bouncing directly above the ring, when B-1 touches the net. The official rules this basket interference. Is the official correct? | 3. | Yes | <input checked="" type="checkbox"/> No |
| 4. A-1's field goal attempt is on the ring, when B-1 intentionally slaps the backboard causing it to vibrate. The official rules this basket interference and awards two points to Team A. Is the official correct? | 4. | Yes | <input checked="" type="checkbox"/> No |
| 5. A-1's throw-in is directly above the basket, in the imaginary cylinder, when B-1 touches the ball. Official rules this basket interference. Is the official correct? | 5. | <input checked="" type="checkbox"/> Yes | No |
| 6. A-1, from behind the 3 point line, throws the ball toward his/her basket. The ball is on its downward flight outside the cylinder above the ring level and in the judgment of the official has a chance of entering the basket, when B-2 bats the ball away. The official rules this is goaltending. Is the official correct? | 6. | <input checked="" type="checkbox"/> Yes | No |
| 7. A-2 receives a pass from A-1. A-2, after catching the pass, fumbles it, recovers, then dribbles several feet and ends the dribble. A-2 fumbles again and recovers the fumble. The official rules this is a violation. Is the official correct? | 7. | Yes | <input checked="" type="checkbox"/> No |
| 8. A-1 ends his/her dribble and makes a bounce pass to A-2. A-2 does not see the pass, so A-1 alertly runs over and recovers the ball. The official rules this is a legal play. Is the official correct? | 8. | Yes | <input checked="" type="checkbox"/> No |
| 9. While A-1 is dribbling, the ball hits B-1's foot and bounces away from A-1. A-1 recovers the ball by catching it and starts a new dribble. The official rules it is a legal play. Is the official correct? | 9. | <input checked="" type="checkbox"/> Yes | No |
| 10. A-1 lifts his/her pivot foot before starting a dribble. The official rules this is traveling. Is the official correct? | 10. | <input checked="" type="checkbox"/> Yes | No |
| 11. A-1 lifts his/her pivot foot to shoot. The official rules this is traveling. Is the official correct? | 11. | Yes | <input checked="" type="checkbox"/> No |
| 12. Airborne A-1 catches the ball, lands on one foot, jumps off that foot and then lands on both feet simultaneously. The official rules this is a traveling violation. Is the official correct? | 12. | Yes | <input checked="" type="checkbox"/> No |
| 13. B-1 sticks his/her leg out to block A-1's pass to A-2. The ball hits B-1's leg. The official rules this is a legal play. Is the official correct? | 13. | Yes | <input checked="" type="checkbox"/> No |
| 14. A-1's pass to A-2 is off line and hits stationary B-2 in the leg. The official rules this is a kicking violation. Is the official correct? | 14. | Yes | <input checked="" type="checkbox"/> No |
| 15. While A-1 is dribbling in the frontcourt, A-2 has been standing in the lane for 3 seconds. The official rules this is a 3 second violation. Is this correct? | 15. | <input checked="" type="checkbox"/> Yes | No |
| 16. While A-1 is dribbling in the frontcourt, B-1 bats the ball away. While the ball is loose the official calls a 3-second violation on A-3, who has been standing in the lane for 3 seconds. Is the official correct? | 16. | <input checked="" type="checkbox"/> Yes | No |
| 17. A-3 has been in the lane for 2.5 seconds, receives a pass from A-1. A-3 immediately drives the lane and tries for goal. A-3 has been in the lane, over 3 seconds, before the try was released. The official rules a 3-second violation. Is this correct? | 17. | Yes | <input checked="" type="checkbox"/> No |
| 18. A-1 is dribbling in the backcourt when B-1 bats the ball away. The official continues the 10 second count. Is the official correct? | 18. | <input checked="" type="checkbox"/> Yes | No |
| 19. A-1, who is dribbling from the backcourt to the frontcourt, has both feet in the frontcourt while dribbling in the backcourt. The official continues the 10 second count. Is the official correct? | 19. | <input checked="" type="checkbox"/> Yes | No |
| 20. Thrower-in A-1 releases the ball on a pass, by rolling it up the floor, in the backcourt. As the ball is rolling along the floor, the official starts the 10 second count. Is the official correct? | 20. | Yes | <input checked="" type="checkbox"/> No |
| 21. B-1 rebounds a missed shot at Team A's basket and passes the ball to a teammate near the division line. A-1 jumps from his/her frontcourt and secures control while both feet are off the floor. A-1 lands in the backcourt. Official rules this is a legal play. Is the official correct? | 21. | <input checked="" type="checkbox"/> Yes | No |
| 22. A-1's throw-in is batted into the backcourt by A-2 from the frontcourt. A-1 is the first to touch the ball in backcourt. The official rules this is a backcourt violation. Is the official correct? | 22. | Yes | <input checked="" type="checkbox"/> No |
| 23. B-1 jumps from his/her frontcourt and intercepts A-1's throw-in pass. B-1 returns to the floor in the backcourt. The official rules this is a legal play. Is the official correct? | 23. | <input checked="" type="checkbox"/> Yes | No |
| 24. A-1's throw-in is caught by A-2, while A-2 has one foot touching the floor, in the frontcourt. A-2, then places the other foot down in the backcourt. The official rules this is a backcourt violation. Is the official correct? | 24. | <input checked="" type="checkbox"/> Yes | No |
| 25. A-1 is holding the ball in Team A's frontcourt near the division line. A-1's bounce pass to A-2, touches the division line and then touches the floor in the frontcourt. A-2, in the frontcourt, catches the ball. The official rules this a legal play. Is the official correct? | 25. | Yes | <input checked="" type="checkbox"/> No |

Shooting, Dribbling and Violations REVIEW SHEET of Lesson 6



1. Is it possible for an airborne shooter to have the ball in his/her hand? Yes _____ No x
2. Is an airborne shooter in the act of shooting? Yes x No _____
3. Which of the following is basket interference? (circle all that apply)
 - a. B-2 touches the ball, while it is on the basket ring.
 - b. B-2 touches the net, while the ball is in the basket.
 - c. B-2 touches the ball, while it is in the imaginary cylinder above the basket ring.
 - d. B-2 slaps the backboard causing the ball to bounce off the basket ring.
 - e. B-2 reaches through the basket from below and blocks a shot outside the cylinder.
 - f. B-2 pull down the movable ring and it contacts the ball before returning to its original position.
4. A thrown ball which is in its downward flight, entirely above ring level and has the possibility of entering the basket which is then touched by a player, would constitute a goaltending violation. True x False _____
5. A dribble begins, only after a player in control, intentionally pushes, throws or bats the ball to the floor. True x False _____
6. A fumble is accidental loss of player control, when a ball unintentionally drops or slips from a player's grasp. True x False _____
7. In which of the following situations would it be considered traveling? (circle all that apply)
 - a. A-1 lifts pivot foot to shoot.
 - b. A-1 lifts pivot foot to pass.
 - c. A-1 lifts pivot foot to dribble.
8. When a player catches the ball with one foot on the floor, does that foot automatically become the pivot foot? Yes _____ No x (not until the other foot touches in a step)
9. Is it a violation, for a player who is holding the ball, to touch the floor with their hand? Yes _____ No x
10. Is it a violation, for a player who is holding the ball, to touch the floor with their knee? Yes x No _____
11. Is it a kicking violation, if a player accidentally contacts the ball with any part of their leg or foot? Yes _____ No x
12. A team shall not be in control of the ball in the backcourt for 10 seconds. True x False _____
13. Which of the following is a backcourt violation? (circle all that apply)
 - a. On a throw-in by A-1, A-2 is airborne from the front court, catches the ball and lands in backcourt.
 - b. On a throw-in by A-1, A-2, who has one foot touching the frontcourt, catches the ball and then steps in the backcourt.
 - c. On a jump ball, A-2 airborne from the frontcourt, catches the ball and lands in backcourt.
 - d. B-2 makes an outlet pass, that is intercepted by A-1, who is airborne from his/her frontcourt and lands in backcourt.

Lesson 7 – Screening, Guarding and Contact



NOTE: On this examination, “In the act of shooting” means the ball is still in the hands of the shooter.

| | | | |
|-----|--|-----|---|
| 1. | A-1 is dribbling near the sideline. B-1 takes a position with two feet on the floor facing A-1, contact ensues on B-1’s torso and he/she is displaced. The official rules a player control foul on A-1. Is the official correct? | 1. | <input checked="" type="checkbox"/> Yes <input type="checkbox"/> No |
| 2. | A-1 is dribbling near the sideline. B-1 takes a position facing A-1, with one foot on the playing court and one foot on the boundary line, contact ensues on B-1’s torso and he/she is displaced. The official rules a player control foul on A-1. Is the official correct? | 2. | Yes <input checked="" type="checkbox"/> No |
| 3. | A-1 catches the ball while in the air and returns to the floor on one foot. B-1 moves into A-1’s path getting both feet on the floor facing A-1 but does not give A-1 any time or distance to stop. A-1 turns and prior to placing the other foot to the floor contacts B-1. Official calls blocking foul on B-1. Is the official correct? | 3. | Yes <input checked="" type="checkbox"/> No |
| 4. | A-5 is dribbling in the frontcourt and B-1 is within six feet of A-1. The official starts a 5 second count. Is the official correct? | 4. | <input checked="" type="checkbox"/> Yes <input type="checkbox"/> No |
| 5. | A-5 is dribbling in the frontcourt and closely guarded by B-1. As A-5 continues his/her dribble, B-1 and B-2 switch guarding assignments so that A-5 remains closely guarded. When the switch occurred the official started a new 5 second count. Is the official correct? | 5. | Yes <input checked="" type="checkbox"/> No |
| 6. | Player A-1, closely guarded in the frontcourt, holds the ball for 4 seconds, then dribbles for 1 second. The official rules this a 5-second closely guarded violation. Is the official correct? | 6. | Yes <input checked="" type="checkbox"/> No |
| 7. | B-2 fouls A-1 while he/she is in the act of shooting. A-1 continues the throwing motion and scores. Official penalizes the foul and counts the goal. Is the official correct? | 7. | <input checked="" type="checkbox"/> Yes <input type="checkbox"/> No |
| 8. | A-2 fouls B-2 while A-1 is in the act of shooting. A-1 continues the throwing motion and scores. Official penalizes the foul and counts the goal. Is the official correct? | 8. | Yes <input checked="" type="checkbox"/> No |
| 9. | After a made goal by A-1 and before the throw-in begins. B-2 pushes A-2 and is charged with a foul. The official rules this is a personal foul. Is the official correct? | 9. | Yes <input checked="" type="checkbox"/> No |
| 10. | While A-1 is dribbling, A-2 commits a personal foul on B-2. Team B is in the bonus. Official awards B-2 a one and one. Is the official correct? | 10. | Yes <input checked="" type="checkbox"/> No |
| 11. | While the ball is in flight on a throw-in by A-1, A-2 commits a common foul on B-2. Team B is in the bonus. The official rules it a team control foul and awards no free throws. Is the official correct? | 11. | <input checked="" type="checkbox"/> Yes <input type="checkbox"/> No |
| 12. | Airborne shooter A-1 flagrantly fouls B-1. Ball enters basket. Official ejects A-1 and cancels the goal. Is the official correct? | 12. | Yes <input checked="" type="checkbox"/> No |
| 13. | A-1 is dribbling above the semicircle, when A-2 pushes B-2 in the lane. Team B is in the bonus. Official rules a team control foul on A and has B-2 shoot a one and one. Is the official correct? | 13. | Yes <input checked="" type="checkbox"/> No |
| 14. | As A-1 drives to the basket to take a lay-up. B-1, comes from behind, while playing the ball and causes excessive contact on A-1. The official rules this is an intentional foul. Is the official correct? | 14. | <input checked="" type="checkbox"/> Yes <input type="checkbox"/> No |
| 15. | As A-1 drives to the basket to take a lay-up. B-1, comes from behind, and while trying to play the ball causes excessive contact on A-1. A-1 makes the lay-up. The official rules this an intentional foul. The official awards A-1 one free throw and Team A the ball at the spot of the foul. Is the official correct? | 15. | Yes <input checked="" type="checkbox"/> No |
| 16. | A-1 is charged with an intentional personal foul against B-1. The official awards B-1 two free throws and awards Team B the ball, out of bounds nearest the spot of the foul. Is the official correct? | 16. | <input checked="" type="checkbox"/> Yes <input type="checkbox"/> No |
| 17. | While A-1’s try is in flight, A-2 pushes B-2. The official rules this a team control foul. Is this correct? | 17. | Yes <input checked="" type="checkbox"/> No |
| 18. | A-1 is in the frontcourt dribbling, when B-3 is charged with an unsporting technical foul. The official awards Team A two free throws and resumes play with a throw-in, for Team A at the division line. | 18. | <input checked="" type="checkbox"/> Yes <input type="checkbox"/> No |
| 19. | After a made goal, A-2 and B-2 commit intentional technical fouls against each other. The official awards each team with two free throws and uses the AP arrow to resume play. Is the official correct? | 19. | Yes <input checked="" type="checkbox"/> No |
| 20. | While A-2 is dribbling, player A-1 sets a rear screen closer than one normal step, on stationary B-2. As B-2 turns and, prior to placing a foot to the floor, contacts A-1. Official rules this is a team-control foul on A-1. Is the official correct? | 20. | <input checked="" type="checkbox"/> Yes <input type="checkbox"/> No |
| 21. | A player of Team A is called for an unsporting technical foul. The official awards two free throws to Team B and resumes play with a throw-in for Team B at the division line. | 21. | <input checked="" type="checkbox"/> Yes <input type="checkbox"/> No |
| 22. | In the first quarter, player A-1 is assessed a technical foul. In the third quarter, player A-1 is assessed a technical for unsporting behavior. The official ejects player A-1. Is the official correct? | 22. | <input checked="" type="checkbox"/> Yes <input type="checkbox"/> No |
| 23. | A-1 goes up for an uncontested dunk and grasps the ring. The official rule this a legal play. Is the official correct? | 23. | Yes <input checked="" type="checkbox"/> No |
| 24. | A-1 throws a punch and hits B-1, B-1 retaliates with a punch but misses. The official charges both players with a flagrant foul, does not award any free throws and puts the ball in play at the point of interruption. Is the official correct? | 24. | <input checked="" type="checkbox"/> Yes <input type="checkbox"/> No |
| 25. | A-1’s try for goal is in flight, when B-2 excessively swings his/her arms and elbows without contact. Official charges B-2 with a technical foul. Is the official correct? | 25. | Yes <input checked="" type="checkbox"/> No |

Screening, Guarding, and Contact REVIEW SHEET of Lesson 7



1. What two things must a defender do, to obtain legal guarding position?
 - a. **Both feet on the playing court (inbounds)**
 - b. **Front of torso facing opponent**
2. While maintaining legal guarding position, the defender must keep their feet in contact with the floor. True _____ False **x**
3. While maintaining legal guarding position, the defender must continue facing the opponent. True _____ False **x**
4. When guarding an opponent with the ball, no time and distance is required to obtain legal guarding position. True **x** False _____
5. If the opponent is airborne, with or without the ball, the defender must have obtained legal guarding position before the opponent left the floor. True **x** False _____
6. The closely guarded count only occurs in the frontcourt, if a defensive player is within 6 feet of a ball handler. True **x** False _____
7. Continuous motion applies to tries or taps for field goals and free throws, but has no significance, unless there is a foul by any defensive player, during a try/tap for goal. True **x** False _____
8. Contact fouls, during a live ball, are considered what type of foul?
Personal **x** Technical _____
9. Contact fouls, during a dead ball, are considered what type of foul?
Personal _____ Technical **x**
10. A player who is charged with a flagrant foul (personal or technical) is disqualified.
True **x** False _____
11. A player, who commits two technical fouls in a game, would be disqualified.
True **x** False _____
12. Can a player commit an illegal screen, if there is no contact? Yes _____ No **x**
13. When screening a stationary opponent, within the visual field, can the screener be anywhere short of contact? Yes **x** No _____
14. Can a player who becomes a screener, outside the visual field of a stationary opponent, be anywhere short of contact? Yes _____ No **x**
15. Are time and distance factors in obtaining a legal screening position? Yes **x** No _____
16. Is fighting always a flagrant act? Yes **x** No _____
17. If A-1 excessively swings their elbows without contacting an opponent, it is a violation?
True **x** False _____

Lesson 8 – Free Throws, Point of Interruption and Correctable Error



NOTE: On this examination, “In the act of shooting” means the ball is still in the hands of the shooter.

| | | | |
|--|-----|------------------------------|-----------------------------|
| 1. A-1 is to attempt a free throw and B-1 and B-2 occupy the first marked lane spaces. Team A chooses not to occupy the second marked lane spaces. B-3 and B-4 request permission to occupy these spaces. Official denies the request. Is the official correct? | 1. | Yes | <input type="checkbox"/> No |
| 2. During A-1's first free throw of two, Team A has two players and Team B has four players occupying the marked lane spaces. Prior to the second free throw, a Team A player vacates a lane space. B-5, who was behind the 3 point arc, moves into the vacant space. The official does not recognize that B-5 has occupied the space until the ball is live. The official gives the delayed violation signal. A-1's free throw is unsuccessful. Official rules this is a violation and awards A-1 a substitute free throw. Is the official correct? | 2. | <input type="checkbox"/> Yes | No |
| 3. After the ball has become live for A-1's free throw attempt, the official recognizes that A-5 and B-5 are occupying the first lane spaces between the neutral zone marks and the end line. Official rules this is a double free throw violation. Is the official correct? | 3. | <input type="checkbox"/> Yes | No |
| 4. Prior to A-1 releasing the ball on a free throw, B-2 enters the lane followed by A-2. The official rules this is a double free throw violation. Is the official correct? | 4. | Yes | <input type="checkbox"/> No |
| 5. Prior to the release of A-1's free throw, B-1 commits a marked lane space violation followed by A-4 breaking the plane of the 3pt arc. A-1's free throw is successful. The official penalizes only the violation on B-1 and counts the goal. Is the official correct? | 5. | Yes | <input type="checkbox"/> No |
| 6. Prior to the release of A-1's free throw, B-1 commits a marked lane space violation. A-1's free throw misses the ring. The official rules this is a double free throw violation. Is the official correct? | 6. | <input type="checkbox"/> Yes | No |
| 7. A-1 is awarded two free throws. On the first free throw, a double violation is committed. Official cancels A-1's first free throw and awards A-1 his/her second free throw and players will play off the make or miss. Is the official correct? | 7. | <input type="checkbox"/> Yes | No |
| 8. Prior to the release of A-1's free throw, B-1 commits a marked lane space violation. A-1's free throw is successful. The official ignores the violation and the goal counts. Is the official correct? | 8. | <input type="checkbox"/> Yes | No |
| 9. Free thrower A-1 fakes a free throw attempt, before releasing the ball on a free throw. No team B players violate the free throw provisions. The free throw is successful. The official ignores the fake and counts the goal. Is the official correct? | 9. | Yes | <input type="checkbox"/> No |
| 10. During a free throw attempt by A-1, B-3 in a marked lane space, enters the free-throw semicircle before the free throw ends. The free throw is unsuccessful. The official rules this is a violation on B-3 and awards a substitute throw. Is the official correct? | 10. | <input type="checkbox"/> Yes | No |
| 11. B-1 fouls A-1 and A-1 is injured on the play. Team A is in the bonus. A-6 reports for A-1 and is beckoned into the game. Prior to A-6 entering the semi-circle to attempt the free throws, the coach has second thoughts and sends A-7 to replace A-6. Official denies A-7 from entering the game to replace A-6. Is the official correct? | 11. | <input type="checkbox"/> Yes | No |
| 12. A-1 is selected to attempt the free throws, for a technical foul. After A-1 misses the first attempt, the coach requests A-2 to attempt the second free throw. Official rules the same player must attempt both free throws. Is the official correct? | 12. | Yes | <input type="checkbox"/> No |
| 13. Following a time-out, free thrower A-1 delays by not entering the semi-circle. Official charges A-1 with a technical foul. Is the official correct? | 13. | Yes | <input type="checkbox"/> No |
| 14. Following a timeout, both teams continue to huddle. Official places the ball on the floor for a free throw by Team A. After 10 seconds, the official blows the whistle and rules a double violation. Is the official correct? | 14. | <input type="checkbox"/> Yes | No |
| 15. During a foul reporting sequence, the official is ready to administer the first of two free throws to A-1 but the first two marked lane spaces above the neutral zone marks are not occupied. Official asks Team B to occupy the spaces. Team B players continue to delay. Official charges Team B with a technical foul. Is the official correct? | 15. | <input type="checkbox"/> Yes | No |
| 16. A-1 is awarded one free throw but the administering official erroneously tells the players that A-1 will shoot two free throws. A-1's first attempt is missed. A-2 grabs the rebound and scores as the other players make no attempt to rebound the ball. After conferring, the officials count the goal. Are the officials correct? | 16. | Yes | <input type="checkbox"/> No |
| 17. The official fails to signal a successful 3pt goal by A-2. B-1 passes to B-2 who scores. Before the ball is at the disposal of Team A, the error is recognized. Official rules the time frame to correct has expired. Is the official correct? | 17. | Yes | <input type="checkbox"/> No |
| 18. The official clearly signals on a successful 3pt goal by A-2. The scorer only awards two points to Team A. B-1 passes to B-2 who scores. While the ball is at the disposal of Team A, the mistake is recognized. Official rules the time frame to correct has expired. Is the official correct? | 18. | Yes | <input type="checkbox"/> No |



Free Throws, Point of Interruption and Correctable Error REVIEW SHEET of Lesson 8

1. The free throw begins, when the ball is released by the official, on the bounce pass to the free thrower.
True_____ False__**x**__
2. Opponents of the free thrower must occupy the lower lane spaces above the neutral zones nearest the endline on every free throw attempt after a common foul, except when the resuming play procedure is in effect. True__**x**__ False_____
3. A maximum of 4 defensive players and two offensive players are allowed along the lane during a free throw attempt. True__**x**__ False_____
4. The player in a marked lane space must have one foot near the outer edge of the free throw lane line.
True__**x**__ False_____
5. Players who are not lined up along the lane must be positioned in the backcourt. True_____ False__**x**__
6. Restrictions end at different times for players in marked lane spaces and for players not positioned in marked lane spaces. True__**x**__ False_____
7. The free thrower has 15 seconds to release the ball on a free throw attempt. True_____ False__**x**__
8. No opponent of the free thrower may distract the attempt. If distraction is determined to have occurred, a substitute free throw will be awarded. True__**x**__ False_____
9. It is a violation for the free thrower to fake a free throw attempt. True__**x**__ False_____
10. If the defensive player along the lane, fakes entering the lane, it is a violation only if it causes the opponent, to enter the lane too soon. True__**x**__ False_____
11. The resuming play procedure for a free throw may only be used following a time out or intermission.
True__**x**__ False_____
12. A player who enters the game for an injured player, who is entitled to free throws, shall be the player that will attempt the free throws. True__**x**__ False_____
13. What are the 5 correctable errors?
 1. **Failure to award a merited free throw.**
 2. **Awarding an unmerited free throw.**
 3. **Permitting a wrong player to attempt a free throw.**
 4. **Attempting a free throw at the wrong basket.**
 5. **Erroneously canceling or counting a score.**
14. If an error is corrected, play should be resumed from the point of interruption, unless it involves the awarding of merited free throws and there has been no change of possession since the error occurred.
True__**x**__ False_____
15. Scoring mistakes may be corrected at any time, up until the final score has been approved.
True__**x**__ False_____



Class 9 - Practice Test (answer key)

| | | |
|-----|-----|--|
| 1. | No | 4-11-1, 4-11-2, 6-7-7 Exception C |
| 2. | Yes | 6-3-7d |
| 3. | Yes | 7-5-4b |
| 4. | No | 9-2-10 Penalties 4 |
| 5. | Yes | 4-36-2a, 7-5-3b |
| 6. | No | 7-1-1 |
| 7. | No | 6-4-3 Note, 7-3-2 |
| 8. | Yes | 9-1-3g, Penalty 4a |
| 9. | Yes | 10-6-4 Penalty |
| 10. | No | 2-10-2 |
| 11. | No | 4-3-3b |
| 12. | No | 5-6-2 Exception 3 |
| 13. | Yes | 6-7-1 |
| 14. | Yes | 10-6-3 Penalty |
| 15. | No | 3-3-1a |
| 16. | No | 4-12-2&3, 9-8 |
| 17. | No | 4-15-4a |
| 18. | No | 3-3-1c, 3-3-4 |
| 19. | No | 4-12-2, 9-9 |
| 20. | Yes | 9-10-1a |
| 21. | No | 9-9-3 |
| 22. | Yes | 7-5-7b |
| 23. | Yes | 6-7-7, 4-11-3 |
| 24. | Yes | 4-19-3, 2012-2013 Points of Emphasis |
| 25. | No | 10-1-2a Penalty |
| 26. | No | 4-15-6a |
| 27. | No | 4-41-4, 6-7 Exception a |
| 28. | No | 8-3 |
| 29. | No | 7-2-2 |
| 30. | No | 4-19-7, 10-7 Penalty 1b |
| 31. | Yes | 4-44-3c |
| 32. | Yes | 4-44-4a |
| 33. | Yes | 3-3-1c |
| 34. | Yes | 3-5-3, 3-6 |
| 35. | No | 4-4-2, 9-9, Case Book play 9.0.1 Situation A |
| 36. | Yes | 5-11-1&2 |
| 37. | No | 4-36-2a |
| 38. | No | 4-12-2c, 4-19-2, 4-19-7, 10-6 Penalty 1b |
| 39. | Yes | 10-5-5 Note |
| 40. | Yes | 4-34-2, 10-5-1 Penalty |
| 41. | No | 6-4-3d |
| 42. | Yes | 4-40-4 |
| 43. | No | 4-19-13, 10-7 Penalty Note |
| 44. | Yes | 7-1-2a, 7-2-2 |
| 45. | No | 4-19-1 Note, 6-1-2b, 4-19-5c, 6-7-1 |
| 46. | No | 6-7-5 Exception a, 5-1-1 |
| 47. | No | 4-19-6, 4-19-7 |
| 48. | Yes | 4-4-6, 9-8 |
| 49. | No | 9-5-3 |
| 50. | Yes | 4-19-7 |



Mock IAABO Test

(ANSWER KEY)

| | | |
|-----|-----|-----------------------------------|
| 1. | Yes | 4-15-5, 4-15-6b, 4-19-7 |
| 2. | No | 9-1-3a, 9-1-3f, Penalty 4b |
| 3. | Yes | 4-19-13 |
| 4. | Yes | 4-28-2, 6-3-8 |
| 5. | No | 3-3-1a |
| 6. | Yes | 6-1-2a |
| 7. | No | 7-2-2, 9-2-2 |
| 8. | Yes | 5-8-3b |
| 9. | Yes | 4-36-2c |
| 10. | Yes | 4-1-2 |
| 11. | No | 4-3-3b |
| 12. | Yes | 9-10-1a |
| 13. | Yes | 5-2-5 |
| 14. | No | 6-4-3 Note, 7-3-2 |
| 15. | No | 4-23-2, 4-23-4a |
| 16. | No | 9-9-3 |
| 17. | No | 9-2-10 Penalties 1 |
| 18. | No | 4-6, 9-11 |
| 19. | Yes | 9-5-3 |
| 20. | No | 4-11-3, 6-7-4 |
| 21. | No | 4-19-7, 4-12-1 |
| 22. | Yes | 4-34-3 |
| 23. | Yes | 4-11-1, 4-11-2, 6-7-7 Exception c |
| 24. | No | 6-7-5 Exception a |
| 25. | Yes | 9-2-6 |
| 26. | No | 4-19-3e, 9-2-10, Penalties 4 |
| 27. | No | 4-44-3c |
| 28. | Yes | 7-6-6, 4-42-5 |
| 29. | Yes | 10-7-12a |
| 30. | No | 4-19-7, 4-12-1 |
| 31. | Yes | 4-23-3a |
| 32. | Yes | 10-7 Penalty 4, 7-5-4b |
| 33. | No | 4-44-5 |
| 34. | No | 9-3-3 |
| 35. | No | 4-29, 9-4 Note |
| 36. | No | 4-15-6c |
| 37. | Yes | 6-4-5 |
| 38. | Yes | 3-6-1 |
| 39. | No | 4-41-4, 6-7-6 Exception a |
| 40. | No | 5-8-3b, 4-4-7b, 6-1-2b |
| 41. | No | 3-3-1c |
| 42. | Yes | 4-12-2d |
| 43. | No | 3-3-7 |
| 44. | No | 7-5-7b |
| 45. | Yes | 7-2-2 |
| 46. | No | 4-44-4b |
| 47. | Yes | 4-34-2, 4-19-5e |
| 48. | No | 4-12-6, 4-12-3a |
| 49. | No | 7-5-7 |
| 50. | No | 5-6 Exception 3 |



Practice Tests

IAABO Practice Test 1

NOTE: On this examination, "In the act of shooting" means the ball is still in the hands of the shooter.



| | | | | |
|-----|---|-----|-----|----|
| 1. | While the ball is at the disposal of Team A for a free throw, the ball is live. Is this correct? | 1. | Yes | No |
| 2. | While A-1's try is in flight, the official inadvertently sounds the whistle. The try is unsuccessful. The official awards the ball to Team A since Team A was the last team to have team control. Is the official correct? | 2. | Yes | No |
| 3. | A-1 lifts his/her pivot foot prior to releasing the ball on a pass. The official rules legal play. Is the official correct? | 3. | Yes | No |
| 4. | During A-1's interrupted dribble, A-1 fouls B-1. The official rules a player control foul. Is the official correct? | 4. | Yes | No |
| 5. | Following a held ball, the official mistakenly awards the ball to Team A. After the ball is legally touched inbounds, the mistake is recognized. The official rules the mistake is correctable and awards the ball to Team B. Is the official correct? | 5. | Yes | No |
| 6. | A-2 fouls B-2 while A-1 is in the act of shooting and before the ball is released. The ball enters the basket. The official counts the goal. Is the official correct? | 6. | Yes | No |
| 7. | Prior to releasing the ball in starting his/her dribble, A-1 lifts the pivot foot off the floor. The official rules this legal play. Is the official correct? | 7. | Yes | No |
| 8. | Team A submits its squad list and starting lineups at least 10 minutes before the game. After the 10 minute mark has been reached, the coach adds two names to the squad list. The official charges Team A with one technical foul. Is the official correct? | 8. | Yes | No |
| 9. | A-1 is bleeding and the official stops the game and directs A-1 to the bench. The coach of Team A requests and is granted a time-out. Following the time out, A-1 comes back onto the court read to play. The official rules A-1 may return to the game. Is the official correct? | 9. | Yes | No |
| 10. | A-1, while airborne, intercepts a pass. A-1 lands on his/her left foot, jumps off that foot, and land simultaneously on both feet. The official rules this a legal play. Is the official correct? | 10. | Yes | No |
| 11. | The throw-in by A-1 is first touched inbounds by A-1. The official rules this is a legal play. Is the official correct? | 11. | Yes | No |
| 12. | Jumper A-1 taps the ball which touches one of the non-jumpers and is caught by A-1. The official rules this legal play. Is the official correct? | 12. | Yes | No |
| 13. | A-1 and B-1 collide. When A-1 gets up off the floor, A-1 exhibits the signs, symptoms and behaviors of a possible concussion. The official allows A-1 to remain in the game. Is the official correct? | 13. | Yes | No |
| 14. | A-1's throw-in goes directly out of bounds without being touched. The official rules a throw-in violation and awards team B the ball at the spot where the ball went out of bounds. Is the official correct? | 14. | Yes | No |
| 15. | While the ball is at the disposal of A-1 for a throw-in, B-1 reaches through the boundary plane and fouls A-1. The official rules this a common foul. Is the official correct? | 15. | Yes | No |
| 16. | During an alternating possession throw-in by Team A, A-2 fouls B-2. Team B is not in the bonus. The official awards Team B the ball out of bounds and instructs the scorer to turn the arrow toward Team B's basket. Is the official correct? | 16. | Yes | No |
| 17. | During a throw-in by A-1, A-2 commits a common foul on B-2. Team B is in the bonus. The official awards B-2 a bonus free throw situation. Is the official correct? | 17. | Yes | No |
| 18. | A-1 is in the act of shooting when B-2 fouls A-2. A-1 continues his/her motion and scores. The official disallows the basket. Is the official correct? | 18. | Yes | No |
| 19. | While Team A is in control, a double personal foul is committed. The official awards the ball back to Team A nearest to the spot of the foul. Is the official correct? | 19. | Yes | No |
| 20. | Coach of Team A is charged with an indirect technical foul. The official informs the scorer that the foul counts as a team foul to reach the bonus. Is the official correct? | 20. | Yes | No |
| 21. | B-1 has obtained a legal guarding position on A-1 and is maintaining that position when A-1 contacts B-1 on the torso while B-1 has both feet off the floor. The official charges B-1 with a blocking foul. Is the official correct? | 21. | Yes | No |



IAABO Practice Test 1 (continued)

| | | | |
|--|-----|-----|----|
| 22. After a field goal and before the ball is at the disposal of the team not credited with the score, the ball is live. Is this correct? | 22. | Yes | No |
| 23. A-1 catches the ball while airborne and lands on both feet simultaneously. A-1 pivots. The official rules this legal play. Is the official correct? | 23. | Yes | No |
| 24. Following the warning horn for a time-out. A-6 reports to enter the game. The official does not allow A-6 into the game. Is the official correct? | 24. | Yes | No |
| 25. Airborne shooter A-1, prior to returning to the floor, charges B-1. The try is successful. The official counts the goal. Is the official correct? | 25. | Yes | No |
| 26. Prior to A-1 releasing this/her free throw B-2 enters the lane followed by A-2. Both players are in a marked lane space. The official rules a free throw violation on Team B. Is the official correct? | 26. | Yes | No |
| 27. The officials' jurisdiction is terminated and the final score approved when the referee leaves the visual confines of the playing area. Is this correct? | 27. | Yes | No |
| 28. A-1 is charged with a technical foul in the second quarter. In the fourth quarter, A-1 is charged with his/her fourth personal foul. The official informs the coach that A-1 is disqualified. Is the official correct? | 28. | Yes | No |
| 29. The predominant color of Team A's jerseys are white. Team A players are wearing leg and arm sleeves that are beige along with headbands and wristbands that are white. The official rules that Team A's apparel are not legal. Is the official correct? | 29. | Yes | No |
| 30. A-1 is awarded two free throws. Prior to the first free throw, B-6 reports to enter the game. The official does not allow B-6 into the game. Is the official correct? | 30. | Yes | No |
| 31. A-1 receives a pass from A-2. After catching the ball A-1 fumbles the ball and immediately recovers it. A-1 then starts a dribble. The official rules this legal play. Is the official correct? | 31. | Yes | No |
| 32. While A-1's try is in flight, a double personal foul is charged. The try is successful. The official resumes play by awarding Team B the ball on the end line. Is the official correct? | 32. | Yes | No |
| 33. A-1's try is directly above the basket in the imaginary cylinder when B-1 touches the basket. The official rules goaltending. Is the official correct? | 33. | Yes | No |
| 34. A-1 is dribbling in the backcourt when B-1 bats the ball away from A-1. The official continues the 10 second count. Is the official correct? | 34. | Yes | No |
| 35. A-2, while in his/her frontcourt, deflects A-1's throw-in into the backcourt. A-1 is the first to touch the ball in backcourt. The official rules this legal play. Is the official correct? | 35. | Yes | No |
| 36. A-1's try is touched by B-1 on its upward flight. Time expires as the ball is in flight. The try is successful. The official counts the goal. Is the official correct? | 36. | Yes | No |
| 37. A-1 jumps into the air in an attempt to save the ball from going out of bounds. After catching the ball and while his/her momentum is carrying him/her out of bounds, A-1 requests a time-out. The official does not honor the request. Is the official correct? | 37. | Yes | No |
| 38. While A-1's try for goal is in flight, A-2 commits a common foul. The try is successful. Team B is in the bonus. The official awards bonus free throws. Is the official correct? | 38. | Yes | No |
| 39. A-1 is charged with an intentional personal foul. The official awards two free throws and awards Team B the ball out of bounds at the division line opposite the table. Is the official correct? | 39. | Yes | No |
| 40. A-1 jumps into the air to attempt a try. Seeing it may be blocked, A-1 voluntarily drops the ball to the floor. A-1 is the first to touch the ball after returning to the floor. The official rules this a violation. Is the official correct? | 40. | Yes | No |
| 41. While A-1 is dribbling, A-2 commits a common foul. Team B is in the bonus. The official rules this a team control foul. Is the official correct? | 41. | Yes | No |
| 42. A-1 commits his/her fifth foul and is disqualified. Prior to Team A replacing A-1, Team B requests a time-out. The official denies the request. Is the official correct? | 42. | Yes | No |
| 43. During Team A's throw-in, A-2, while airborne from the frontcourt, catches the ball. A-2 lands on one foot in the frontcourt and the other foot then comes down in the backcourt. The official rules this legal play. Is the official correct? | 43. | Yes | No |

IAABO Practice Test 1 (continued)



| | | | |
|---|-----|-----|----|
| 44. During an alternating possession throw-in, thrower-in A-1 commits a throw-in violation. The official awards the ball to Team B and directs the scorer to switch the arrow to Team B. Is the official correct? | 44. | Yes | No |
| 45. During a jump ball to start the game, A-1's tap is simultaneously deflected out of bounds by A-2 and B-2. The official rules that the original jumpers will re-jump to resume play. Is the official correct? | 45. | Yes | No |
| 46. A-1, who is dribbling from the backcourt to the frontcourt, has both feet in the backcourt while dribbling in the frontcourt. The official continues the 10 second count. Is the official correct? | 46. | Yes | No |
| 47. The official erroneously awards A-1 a one and one. A-1 makes both free throws. B-1 passes to B-2, who scores. While the ball is at the disposal of Team A following the score, the error is recognized. The official rules the error can still be corrected. Is the official correct? | 47. | Yes | No |
| 48. Team A is in control and the possession arrow favors Team B when a double personal foul is assessed. The official resumes play using the alternating possession procedure. Is the official correct? | 48. | Yes | No |
| 49. While A-1 is dribbling, B-1 bats the ball away from A-1. A-1 catches the ball with both hands and starts another dribble. The official rules this legal play. Is the official correct? | 49. | Yes | No |
| 50. As the official bounces the ball to free thrower A-1 and before A-1 catches the ball, the ball is dead. Is this correct. | 50. | Yes | No |

IAABO Practice Test 1 (answer key)



| | |
|---------|--|
| 1. Yes | 6-1-2c |
| 2. No | 4-12-3a, 6-4-3f, 4-36-2c |
| 3. Yes | 4-44-3a |
| 4. No | 9-1-3a Penalties 4b |
| 5. No | 7-6-6, 4-42-5 |
| 6. No | 4-11, 6-7-4 |
| 7. No | 4-44-3c |
| 8. Yes | 10-1-2b Penalty |
| 9. Yes | 3-3-7 |
| 10. Yes | 4-44-2a3 |
| 11. No | 9-26 |
| 12. Yes | 6-3-8 |
| 13. No | 3-3-8 |
| 14. No | 9-2-2 Penalty |
| 15. No | 9-2-10 Penalties 4, 4-19-3e |
| 16. No | 6-4-5 |
| 17. No | 4-12-2d, 4-19-7 |
| 18. No | 4-11-1, 4-11-2, 6-7-5 exception c |
| 19. No | 4-36-2a |
| 20. No | 4-19-13, 10-6 Note |
| 21. No | 4-23-3a |
| 22. No | 6-7-1 |
| 23. Yes | 4-44-2a1 |
| 24. Yes | 3-3-1 |
| 25. No | 5-1-2, 4-19-6 |
| 26. Yes | 9-1-3-g Penalties 4a |
| 27. No | 2-2-4 |
| 28. Yes | 2-11-5, 4-14-1 |
| 29. Yes | 3-5-3a |
| 30. Yes | 3-3-1c |
| 31. Yes | 4-21, 4-15 |
| 32. Yes | 4-36-2b |
| 33. No | 4-22 |
| 34. Yes | 4-12-4,9-8 |
| 35. Yes | 4-12-2d,9-9 |
| 36. Yes | 4-41-4 |
| 37. No | 5-8-3a |
| 38. Yes | 4-12-6, 4-12-3a |
| 39. No | 7-5-4b |
| 40. Yes | 4-44-3c |
| 41. Yes | Penalty 4-12-1, 4-12-2a, 4-19-7, 10-7 Penalty 1b |
| 42. Yes | 5-8-3b |
| 43. Yes | 9-9-3 |
| 44. Yes | 6-4-5 |
| 45. No | 6-4-3 Note, 7-3-2 |
| 46. Yes | 4-4-6 |
| 47. No | 2-10-2 |
| 48. No | 4-36-2a |
| 49. Yes | 9-5-2 |
| 50. Yes | 6-1-2b, 4-4-7 |

IAABO Practice Test 2

NOTE: On this examination, "In the act of shooting" means the ball is still in the hands of the shooter.



| | | | |
|---|-----|-----|----|
| 1. A-1 starts his/her dribble by lifting his/her pivot foot before releasing the ball. The official rules legal play. Is the official correct? | 1. | Yes | No |
| 2. While A-1's try is in flight, A-2 fouls B-2. The try is successful. Team B is not in the bonus. The official rules Team B will have a designated spot throw-in. Is the official correct? | 2. | Yes | No |
| 3. As the ball is being bounced from the official to free thrower A-1 and before A-1 catches it, B-1 requests a time-out. The official refuses to grant the request. Is the official correct? | 3. | Yes | No |
| 4. During a jump ball to start the game, A-1 taps the ball which is simultaneously deflected out of bounds by A-2 and B-2. The official has the original jumpers re-jump to resume play. Is the official correct? | 4. | Yes | No |
| 5. While A-1's free throw is in flight, B-1 steps into the free throw lane from a marked lane space. The free throw is unsuccessful. The official rules legal play. Is the official correct? | 5. | Yes | No |
| 6. During a throw-in by A-1, B-1 breaks the plane of the boundary line before the ball is released. The official ignores this since B-1 did not touch the ball. Is the official correct? | 6. | Yes | No |
| 7. The ball becomes live on a jump ball when the ball leaves the official's hands. Is this correct? | 7. | Yes | No |
| 8. The possession arrow favors Team B. Following a held ball, the official mistakenly gives the ball to Team A. After the ball is legally touched inbounds, the mistake is recognized. The official stops play and awards the ball to Team B. Is the official correct? | 8. | Yes | No |
| 9. While the ball is in flight on a try for goal, the signal sounds indicating time has expired in the first quarter. Before the try ends, B-1 is assessed with a technical foul. The official awards the free throws immediately and starts the second quarter with an alternating possession throw-in. Is the official correct? | 9. | Yes | No |
| 10. A-1 is erroneously awarded a one and one. A-1 makes both free throws. B-1 inbounds the ball to B-2 who scores. The error is now recognized before the ball is at the disposal of Team A. The official corrects the error. Is the official correct? | 10. | Yes | No |
| 11. A-1 commits his/her fifth foul and is disqualified. Prior to Team A replacing A-1, Team A requests a time-out. The official does not grant the request. Is the official correct? | 11. | Yes | No |
| 12. With 3-tenths of a second on the game clock and play is to resume with a throw-in, A-1's throw-in is caught by A-2, who tries for goal. The ball enters the basket. The official counts the goal. Is the official correct? | 12. | Yes | No |
| 13. A-1 catches a pass from A-2 and then fumbles the ball. A-1 immediately catches it and then starts a dribble. The official rules legal play. Is the official correct? | 13. | Yes | No |
| 14. A-1 enters the court wearing tights. The official rules the tights are not legal apparel. Is the official correct? | 14. | Yes | No |
| 15. A-1's throw-in goes directly out of bounds without being touched. The official awards the ball to Team B at the spot where the ball went out of bounds. Is the official correct? | 15. | Yes | No |
| 16. Prior to A-1 attempting his/her first free throw of two, A-6 reports to the scorer's table to replace A-5. The scorer sounds the horn and the official beckons A-6 into the game. Is the official correct? | 16. | Yes | No |
| 17. B-1 breaks the plane of the 3 point line before A-1's free throw hits the ring or backboard. The try is unsuccessful. The official rules legal play. Is the official correct? | 17. | Yes | No |
| 18. A double personal foul was committed when Team A was in control. The official awards the ball back to Team A nearest to where the ball was located when the foul occurred. Is the official correct? | 18. | Yes | No |
| 19. While A-1 is dribbling in the backcourt, B-1 bats the ball away from A-1. The official stops the 10 second count. Is the official correct? | 19. | Yes | No |
| 20. While A-1 is in control, A-2 commits a common foul. Team B is in the bonus. The official awards Team B a throw-in. Is the official correct? | 20. | Yes | No |



IAABO Practice Test 2 (continued)

| | | | |
|--|-----|-----|----|
| 21. A-1's try lodges between the backboard and the ring. The official rules the ball will be awarded via the alternating possession arrow for a throw-in. Is the official correct? | 21. | Yes | No |
| 22. A-1's throw is caught by A-2 with one foot on the floor in the frontcourt. A-2 then places the other foot down in the backcourt. The official rules a backcourt violation. Is the official correct? | 22. | Yes | No |
| 23. Jumper A-1 taps the ball which is touched by non-jumper B-2 and caught by jumper A-1. The official rules legal play. Is the official correct? | 23. | Yes | No |
| 24. The bottom of the ball is touching the top of the basket ring when B-1 touches the net. The official rules legal play. Is the official correct? | 24. | Yes | No |
| 25. While the ball is in flight, the official assesses a double personal foul. A-1's try is successful. The official counts the goal and resumes play by awarding the ball to Team B on the end line. Is the official correct? | 25. | Yes | No |
| 26. A-1 catches the ball with his/her right foot on the floor, A-1 steps several times with the left foot. A-1 picks up the right foot and begins a dribble. The official rules legal play. Is the official correct? | 26. | Yes | No |
| 27. While A-1 is in the act of shooting and before releasing the ball, B-2 fouls A-2. A-1 continues the motion and scores. The official disallows the goal and penalizes the foul. Is the official correct? | 27. | Yes | No |
| 28. Team A's head coach is charged with an unsporting technical foul. The official notifies the scorer that the foul does not count toward reaching the bonus. Is the official correct? | 28. | Yes | No |
| 29. While A-1 is dribbling, B-1 places a hand on A-1 and immediately removes it. Seconds later, B-1 puts a hand on A-1 again. The official rules the contact as incidental. Is the official correct? | 29. | Yes | No |
| 30. Defensive player B-1 intentionally extends his/her leg and deflects A-1's pass. The ball hits B-1 in the thigh. The official rules a violation. Is the official correct? | 30. | Yes | No |
| 31. The throw-in by A-1 is first touched inbounds by A-1. The official rules a throw-in violation. Is the official correct? | 31. | Yes | No |
| 32. After A-1 ends his/her dribble, A-1 fumbles the ball. A-1 catches the ball with both hands and dribbles again. The official rules legal play. Is the official correct? | 32. | Yes | No |
| 33. A-1 and B-1 foul each other at approximately the same time. The contact occurs while the ball is live. The official rules a double personal foul. Is the official correct? | 33. | Yes | No |
| 34. While A-1's free throw is in flight, A-2 in a marked lane space, enters the lane. The official rules legal play. Is the official correct? | 34. | Yes | No |
| 35. Player A-1 is fouled and injured. A-6 replaces A-1 to attempt the free throws. After the successful free throws, A-7 reports to replace A-6. The official does not allow the substitution. Is the official correct? | 35. | Yes | No |
| 36. B-1 is legally guarding dribbler A-1. B-1 is moving sideways and backwards to stay in front of A-1 when A-1 contacts B-1 on the torso knocking B-1 to the floor. The official rules a blocking foul on A-1. Is the official correct? | 36. | Yes | No |
| 37. A-1 lifts his/her pivot foot off the floor prior to releasing the ball on a pass. The official rules legal play. Is the official correct? | 37. | Yes | No |
| 38. A-1's throw-in is batted by B-1 back to A-1 who touches it while still out of bounds. The official rules B-1 caused the ball to be out of bounds and awards the ball to Team A. Is the official correct? | 38. | Yes | No |
| 39. During a designated spot throw-in, A-1 moves straight back 5 feet. The official rules legal play. Is the official correct? | 39. | Yes | No |
| 40. Following the warning horn to resume play after a time-out, A-6 reports to the scorer to enter the game. The official does not allow A-6 into the game. Is the official correct? | 40. | Yes | No |



IAABO Practice Test 2 (continued)

| | | | |
|---|-----|-----|----|
| 41. A-1's throw in is caught by A-2, who is airborne from the front court. A-2 lands in backcourt. The official rules legal play. Is the official correct? | 41. | Yes | No |
| 42. A-1 is fouled as the signal sounds indicating time has expired in the fourth quarter with the score tied. A-1 is awarded two free throws. Prior to the first free throw, Team B is granted a time-out. Following the time-out, A-1's first free throw is unsuccessful. Team B requests another time-out. The official refuses the request. Is the official correct? | 42. | Yes | No |
| 43. A-1 receives the ball while in the air. A-1 lands on both feet. A-1 pivots before releasing the ball on a pass. The official rules legal play. Is the official correct? | 43. | Yes | No |
| 44. A-1, while dribbling from the backcourt to the frontcourt, has both feet in the frontcourt while dribbling in the backcourt. The official stops the 10 second count. Is the official correct? | 44. | Yes | No |
| 45. A common foul is charged to A-2 while the ball is at the disposal of A-1 for a throw-in. Team B is in the bonus. The official awards a bonus free throw situation. Is the official correct? | 45. | Yes | No |
| 46. A-1's pass to A-2 in the frontcourt is muffed into the backcourt. Seeing it will be intercepted, A-2 requests a time-out. The official grants the request. Is the official correct? | 46. | Yes | No |
| 47. During an interrupted dribble by A-1, he/she catches up to the ball and recovers it with both hands and passes the ball. The official rules legal play. Is the official correct? | 47. | Yes | No |
| 48. A-2 fouls B-2, while A-1 is dribbling. The official awards B-2 a bonus free throw situation. Is the official correct? | 48. | Yes | No |
| 49. Prior to the start of the game, Team B is charged with a technical foul. The official does not allow A-6 to replace designated starter A-1 to attempt the free throws. Is the official correct? | 49. | Yes | No |
| 50. While A-1 is in the act of shooting and prior to releasing the ball, A-2 fouls B-2. A-1 continues the motion and scores. The official disallows the goal. Is the official correct? | 50. | Yes | No |



IAABO Practice Test 2 (answer key)

| | | |
|-----|-----|---|
| 1. | No | 4-44-3c, 4-15-3 |
| 2. | No | 7-5-7c |
| 3. | No | 5-8-3b, 4-4-7b |
| 4. | No | 6-4-3c Note, 7-3-2 |
| 5. | Yes | 9-1-3 d &g |
| 6. | No | 4-47-1 |
| 7. | Yes | 6-1-2a |
| 8. | No | 6-4-1, 2013-14 Case Book Play 6-4-1 Situation D |
| 9. | Yes | 5-6-2 Exception 3 |
| 10. | Yes | 2-10-1, 2-10-4, 2-10-6 |
| 11. | Yes | 5-8-3b |
| 12. | No | 5-2-5 |
| 13. | Yes | 4-21, 4-15-1 |
| 14. | No | 3-5-3 |
| 15. | No | 9-2-2 |
| 16. | No | 3-3-1c |
| 17. | No | 9-1-3f- Penalties 2b |
| 18. | Yes | 4-36-2a |
| 19. | No | 4-12-3, 9-8, 4-4-1 |
| 20. | Yes | 4-19-7 |
| 21. | Yes | 6-4-3d |
| 22. | Yes | 4-4-2, 9-9-1 |
| 23. | Yes | 6-3-8 |
| 24. | No | 4-6-1 |
| 25. | Yes | 4-36-2d |
| 26. | No | 4-44-3c |
| 27. | No | 4-11-1, 4-11-2 |
| 28. | No | 4-19-13 |
| 29. | No | 10-7-12d |
| 30. | Yes | 9-4-Note |
| 31. | Yes | 9-2-6 |
| 32. | No | 4-15-4a, 9-5-3 |
| 33. | Yes | 4-19-8a |
| 34. | Yes | 9-1-3 d&g |
| 35. | No | 3-3-1d |
| 36. | No | 4-23-3c |
| 37. | Yes | 4-44-3c |
| 38. | No | 7-2-2 |
| 39. | Yes | 4-42-6 |
| 40. | Yes | 3-3-1a |
| 41. | Yes | 9-9-3 |
| 42. | Yes | 5-11-7 |
| 43. | Yes | 4-44-2a1 |
| 44. | No | 4-4-6 |
| 45. | No | 4-19-7 |
| 46. | No | 5-8-3a, 5-8-3b |
| 47. | Yes | 4-15-4a, 9-5 |
| 48. | No | 4-19-7 |
| 49. | No | 3-2-2a |
| 50. | Yes | 4-11-1, 4-41-4, 6-7-7, 6-7-7 |

Technical Foul Penalty Summary



| Type of Foul | Charged to | Counts Towards | Head Coach Assessed | Head Coach Loses Coaching Box |
|---|------------|--|---------------------|-------------------------------|
| Administrative: <ul style="list-style-type: none"> Providing rosters, starters, number of each player, before 10 min. Changes or additions to scorebook after 10min. (only 1 technical regardless of the number of infractions) | Team | Team Foul Count | No | No |
| Team: <ul style="list-style-type: none"> Excess time-out | Team | Team Foul Count | No | No |
| Team: <ul style="list-style-type: none"> Team not ready to start the half TV monitor and electronic communications Not occupying assigned bench More than five players Violation after team warning for delay All players not returning at the same time after a time-out or intermission Players to locking arms in effort to restrict movement of an opponent | Team | Team Foul Count | No | Yes |
| Substitute: <ul style="list-style-type: none"> Entering the court without reporting to scorer or being beckoned in | Substitute | 2 Technicals 5 Personal Team Foul Count | No | No |
| Players: <ul style="list-style-type: none"> Changing number without reporting Purposely obstructing an opponent's vision by waving hands near his/her eyes Delaying return to court Grasping basket Dunking a dead ball Slapping backboard Delaying game Unsporting act/conduct Goaltending a free throw Reaching through the boundary plane to touch or dislodge the ball Use of tobacco or e-cigarettes Removing jersey/ pants Flopping | Player | 2 Technical 5 Personal Team Foul Count | No | No |

Technical Foul Penalty Summary



| Type of Foul | Charged to | Counts Towards | Head Coach Assessed | Head Coach Loses Coaching Box |
|--|-----------------|---|---------------------|-------------------------------|
| Bench Personnel: <ul style="list-style-type: none"> Fighting Leaving bench area to fight, but doesn't participate in the fight | Bench Personnel | Disqualified Team Foul Count | Indirect | Yes |
| Bench Personnel: <ul style="list-style-type: none"> Unsporting act/conduct Entering the court without permission Removing jersey/pants Grasping basket or dunking during warm-ups or half time | Bench Personnel | 2 Technical 5 Personal Team Foul Count | Indirect | Yes |
| Assistant Coach: <ul style="list-style-type: none"> Unsporting conduct | Assistant Coach | 2 Tech. toward ejections Team Foul Count | Indirect | Yes |
| Head Coach: <ul style="list-style-type: none"> Unsporting conduct Outside of coaching box Not replacing player as required in 15 seconds Playing a disqualified player Player wearing illegal uniform (only 1 technical regardless of the number of offenders) Team members leaving the bench area and /or playing court for an unauthorized reason. | Head Coach | 2 Tech. or 3 Indirects toward ejection Team Foul Count | Direct | Yes |